

RAETIHI

COMMUNITY HUB
CONSULTATION



'20-21

E TŪ WHĀNAU!

Phase One Consultation Report

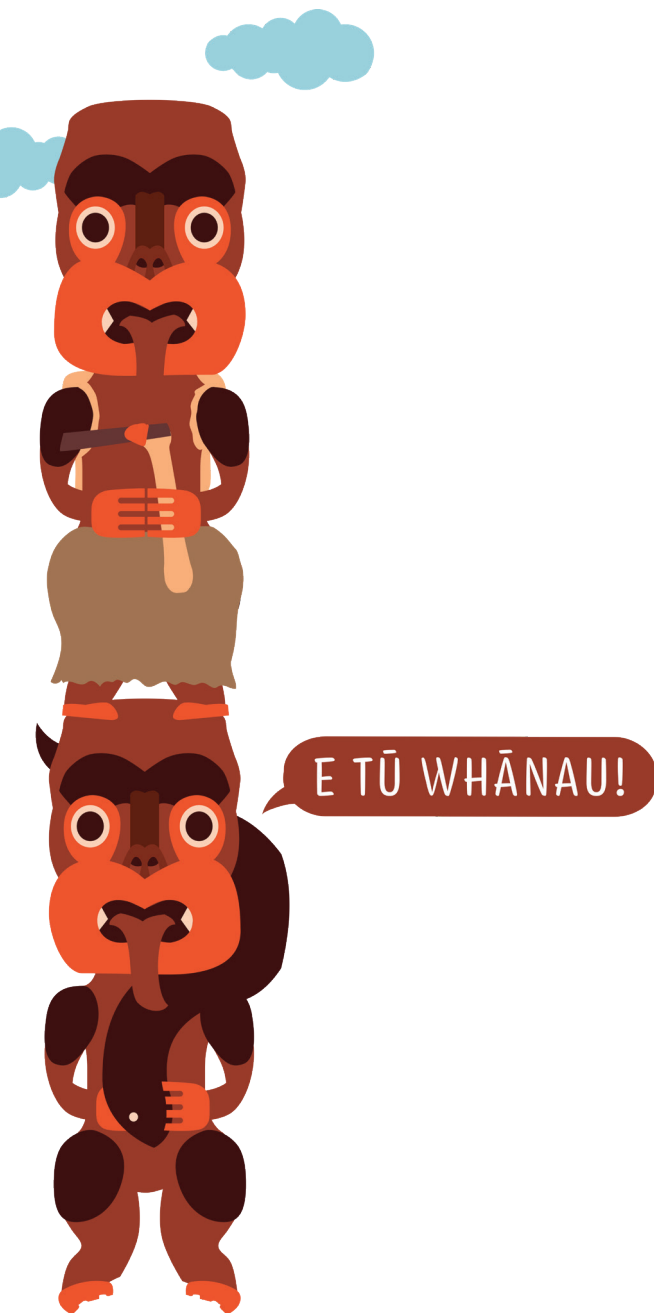
November 2021

YOUR ASPIRATIONS ARE
THE INSPIRATION!



HE MANU ANŌ NGĀ MANU KAI POROPORO
HE MANU ANŌ NGĀ MANU KAI MIRO E
ONE BIRD EATS POROPORO, ANOTHER MIRO E

EACH CONTRIBUTES IN THEIR OWN WAY



RĀRANGI TAKE

EXECUTIVE SUMMARY

1.1	BACKGROUND	PAGE 5
1.2	PROJECT OBJECTIVES	PAGE 5
1.3	CONSULTATION METHODS	PAGE 5
1.4	KEY THEMES EMERGING	PAGE 5
1.5	RECOMMENDATIONS	PAGE 6
1.6	PROPOSED TIMELINE	PAGE 7

INTRODUCTION

2.1	BACKGROUND	PAGE 8
2.2	PROJECT OBJECTIVES	PAGE 8
2.3	PURPOSE OF THE REPORT	PAGE 8

PHASE ONE CONSULTATION

3.1	TECHNIQUES USED	PAGE 9-11
3.2	KEY CONSULTATION OUTCOMES	PAGE 11-14
3.3	PHASE ONE RESPONSE ANALYSIS SUMMARY	PAGE 15

APPENDICES

APPENDIX 1	RAETIHI COMMUNITY WORKSHOPS	PAGE 16-18
APPENDIX 2	WRITTEN SUBMISSIONS & GENERAL FEEDBACK	PAGE 19
APPENDIX 3	PUBLIC EVENTS FEEDBACK RECIEVED	PAGE 19
APPENDIX 4	UENUKU CHARITABLE TRUST	PAGE 20
APPENDIX 5	RUAPEHU DISTRICT COUNCIL	PAGE 21
APPENDIX 6	WAIMARINO-WAIOURU COMMUNITY BOARD	PAGE 21-22
APPENDIX 7	WAIMARINO-WAIOURU YOUTH COUNCIL	PAGE 23

YOUR ASPIRATIONS ARE
THE INSPIRATION!



APPENDIX 8 RAETIHI PROMOTIONS	PAGE 23-24
APPENDIX 9 DREAM MAKERS TRUST & TE PUKE KARANGA HAUORA	PAGE 24-25
APPENDIX 10 RAETIHI & OHAKUNE RUAPEHU DISTRICT COUNCIL - STAFF	PAGE 25
APPENDIX 11 RAETIHI PLAYGROUP	PAGE 26
APPENDIX 12 RUAPEHU HEALTH LTD MANAGERS	PAGE 26
APPENDIX 13 RAETIHI VOLUNTEER FIRE BRIGADE	PAGE 26
APPENDIX 14 RUAPEHU REAP	PAGE 27
APPENDIX 15 VOLCANO VIBE COLLECTIVE	PAGE 27
APPENDIX 16 RAETIHI-OHAKUNE ROTARY CLUB	PAGE 28
APPENDIX 17 THEATRE ROYAL WAIMARINO CHARITABLE TRUST & PHOENIX PLAYERS	PAGE 28
APPENDIX 18 WAIMARINO BUDGET SERVICES	PAGE 28
APPENDIX 19 WAIMARINO COMMUNITY TOY LIBRARY	PAGE 29
APPENDIX 20 WAIMARINO HEALTH CENTRE TEAM	PAGE 29
APPENDIX 21 WAIMARINO MUSEUM	PAGE 30
APPENDIX 22 WAIMARINO WELLNESS CENTRE PROJECT	PAGE 30
APPENDIX 23 COMMUNITY SURVEY	PAGE 31
APPENDIX 24 RANGATAHI SURVEY	PAGE 32-34
APPENDIX 25 MEDIA	PAGE 36-41

EXECUTIVE SUMMARY

1.1 BACKGROUND

This report documents the outcomes of the community consultation carried out in accordance with the Community Engagement Plan for the Raetihi Community Hub. The bulk of community engagement took place between December 2020 and June 2021 to help inform and assist the Project Steering Group in considering the development of a Community Hub in Raetihi.

1.2 PROJECT OBJECTIVES

Develop a 'fit for purpose' Community Hub and Iwi services that will be responsive to the Raetihi community's educational, cultural, heritage and recreational needs now and in the future.

1.3 CONSULTATION METHODS

A range of different community engagement and communication techniques were used to gain feedback from the community from media releases, community survey, Facebook, flyers, workshops, Business after 5, individual and community group hui and pop-up stands at Waimarino A&P Show and Raetihi Christmas Carnival.

1.4 KEY THEMES EMERGING

Central focus - Raetihi lacks a hub

- A lack of public/civic spaces that enable the community to come together has been identified. The community recognise there is no space in town that can accommodate their needs
- There is a need to showcase Raetihi and tell the stories of its diverse and colourful history
- A dedicated youth space with programmes and activities taking place with tamariki and rangatahi at the centre
- A functional kaumātua space
- A creative space where activities can take place for all ages
- A welcoming accessible community space for everyone to come together.

Community use – demonstration of the need to build new

- The Community Hub will address a number of community needs from a place where people can come together; to offering training opportunities; a one-stop shop that could be used by government agencies; a banking hub – including the ability to support and up-skill members of the community to access financial assistance; hot desk office spaces; a one-stop place to come and easily access advice and information
- Some groups raised the potential for operating out of the Community Hub including: REAP; Raetihi Promotions; Raetihi Information Centre; Waimarino Budget Service; Toy Library; Play Group
- Importance of displaying taonga
- Having cultural and creative activities.

Location

Several potential locations were identified, and varying views were expressed:

- Located on the corner of Seddon Street and SH4. The views suggested this would provide an welcome entry to the town from both highways. They also mentioned the pub has caused enough problems for the community and needs to go. Good to face the hub towards the maunga and be a gateway
- Maintain the facades of the empty shops located on Seddon Street, demolish the back of the buildings, and build new, thereby maintain the heritage look of Raetihi
- Build to the Wellness Centre and create a link
- Build by the theatre to enable it to be incorporated.

Swimming Pool & Indoor Recreation

The swimming pool was raised during every conversation. It is seen as a critically important part of the social well-being in Raetihi. The community love the pool however, many expressed frustrations at the lack of action over the years

- People talked about the potential of an indoor recreation space either alongside

the rec area or attached to the squash club. Some people wondered whether a central space in the hub could be used as a recreation centre, a flexible space that returned to group activity as required.

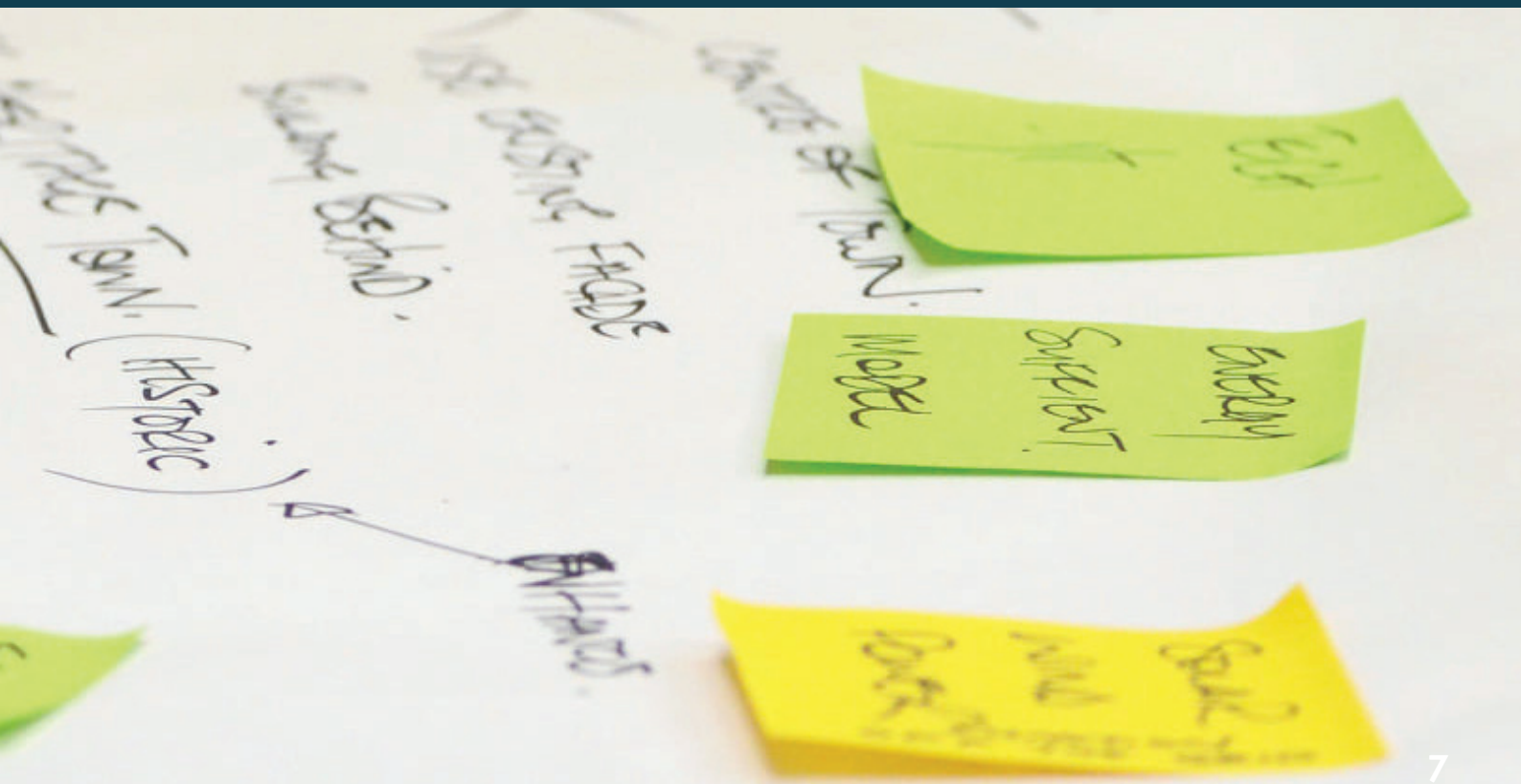
1.5 RECOMMENDATIONS

1. The PSG for the Raetihi Community Hub receive this Community Hub Consultation Report for review
2. Comprehensive analysis of potential sites is undertaken and presented to the PSG
3. PSG gives consideration to the relative priorities and gathers detailed information for future use and functions of the community hub; including identifying physical space requirements.
4. Further consultation with key stakeholders is undertaken in relation to the priorities for required community hub spaces
5. PSG to commence the development of a Design Brief
6. To continue discussions with the key stakeholders, and keep the community informed about key decisions and progress with the project.



1.6 PROPOSED TIMELINE

- | | |
|---|---------------|
| 1. PSG receive Draft Community Consultation Report | October 2021 |
| 2. Ruapehu District Council and Uenuku Charitable Trust consider the recommendations presented by the PSG | December 2021 |
| 3. Design brief is developed and presented to PSG | February 2022 |
| 4. Analysis and options paper of locations prepared for PSG | March 2022 |
| 5. Consultant engaged to undertake business case | April 2022 |
| 6. Design brief and business case completed | July 2022 |
| 7. Design brief, business case and fundraising plan are submitted to PSG for consideration | July 2022 |
| 8. Consideration and development of work plan for next steps | July 2022 |



INTRODUCTION

2.1 BACKGROUND

Ruapehu District Council (RDC) and Uenuku Charitable Trust (UCT) are working towards exploring the possibility of jointly creating a shared multi-purpose Community Hub (Hub) for the Raetihi area to accommodate and provide for their separate activities, as well as for present and possible future community activities, including, and without limitation:

- RDC local government administration and service centre
- Head office and kaimahi space for UCT and subsidiary Iwi entities
- i-SITE and/or community-information space
- Library and/or reference space
- Technology/computer centre
- NZ Post PostShop
- Conference and meeting rooms
- Offices for other governmental agencies e.g. Police
- Youth facilities including a tech hub and sound studio
- Activities rooms/areas
- Function and exhibition/display areas.

Stage 1 has been completed with the development of an initial business case prepared by Horwath HTL in 2019. To enable the Hub project to move to the next stage of the design process, intensive engagement with the community and all stakeholders across the wider Raetihi area has been undertaken by the Project Steering Group (PSG).

This report summarises the outcomes of the community consultation in accordance with the Community Engagement Plan for the proposed Raetihi Community Hub.

Due to Covid-19, community engagement was delayed in 2020 with the bulk of the engagement taking place early 2021 and concluding in June 2021 to assist the compilation of a final Business Case to consider the development of a Community

Hub in Raetihi. The final Business Case will include recommendations on the purpose, theme and function of the Community Hub.

2.2 PROJECT OBJECTIVES

The fundamental project objective is to: Develop a 'fit for purpose' Community Hub, inclusive of community and Iwi services that will be responsive to the Raetihi community's educational, cultural, heritage, business and recreational needs now and in the future.

Other project objectives are to:

- Provide services and community facilities to cater for current and future growth within the Ruapehu District
- Provide a place to potentially house the UCT head office plus space to exhibit taonga and tell their stories
- Promote the use of services and community facilities, particularly for tamariki, rangatahi and an aging kaumātua population
- To encourage democratic local decision making and promote the social, economic, environmental and cultural wellbeing of Raetihi and the wider Ruapehu District now and for the future.

2.3 PURPOSE OF THE REPORT

This report provides a summary of the feedback received over the consultation phase of this part of the project from December 2020 through to June 2021. The feedback has been summarised into key consultation outcomes identifying issues and themes and makes recommendations in considering the next steps.

PHASE ONE CONSULTATION

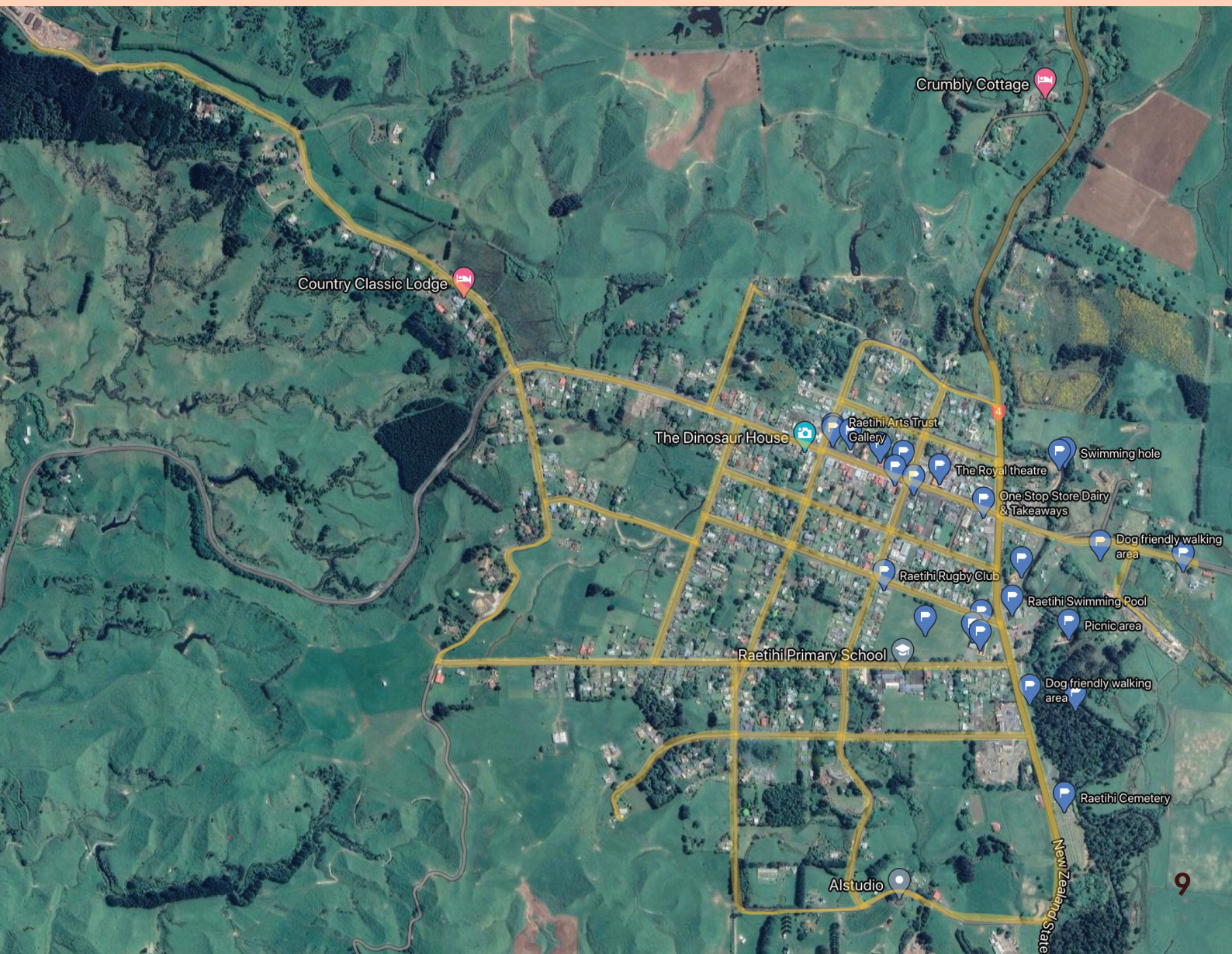
3.1 TECHNIQUES USED

A range of different community engagement and communication techniques were used to gain feedback from the community. Each technique used and the results are outlined below.

Media Releases

All media releases resulted in local media publication including Ruapehu Bulletin and the Whanganui Chronicle. Promotional images with associated captions were also published by local media throughout the consultation.

- A media release was sent out on 14 February, 2020 letting the community know the community consultation was going to begin on the proposed possible joint venture project with UCT and RDC asking the community to make contact
- Media release 1 December, 2020 – restart after lock-down
- Media release 22 February, 2021 regarding community hui
- Media release 26 May, 2021 business after 5 hui invite
- Media release 4 June 2021 community consultation nearing the end.



Facebook

A Raetihi Community Hub Facebook page was established to keep the community informed. The page has 490 people like it and 520 are regular followers. The page was used to post notices about up-coming events and share with the community progress of what was happening as it happens.

Letter Box Drop

An information letter was personally delivered to 546 addresses (yellow highlighted area in image below) in Raetihi on 18 February 2021.

Public Events

Attendance at the Raetihi Christmas Festival and parade on Saturday 14 December, 2020 through a market stall on Seddon Street and engaging with people throughout the day seeking their feedback.

Attendance at the Waimarino A&P Show on 20 February, 2021. Set up a stall and talked to many people throughout the day and handed out information sheets and flyers. Engaged with a wide range of people, some who were willing to provide names others provided feedback.

Community Workshops

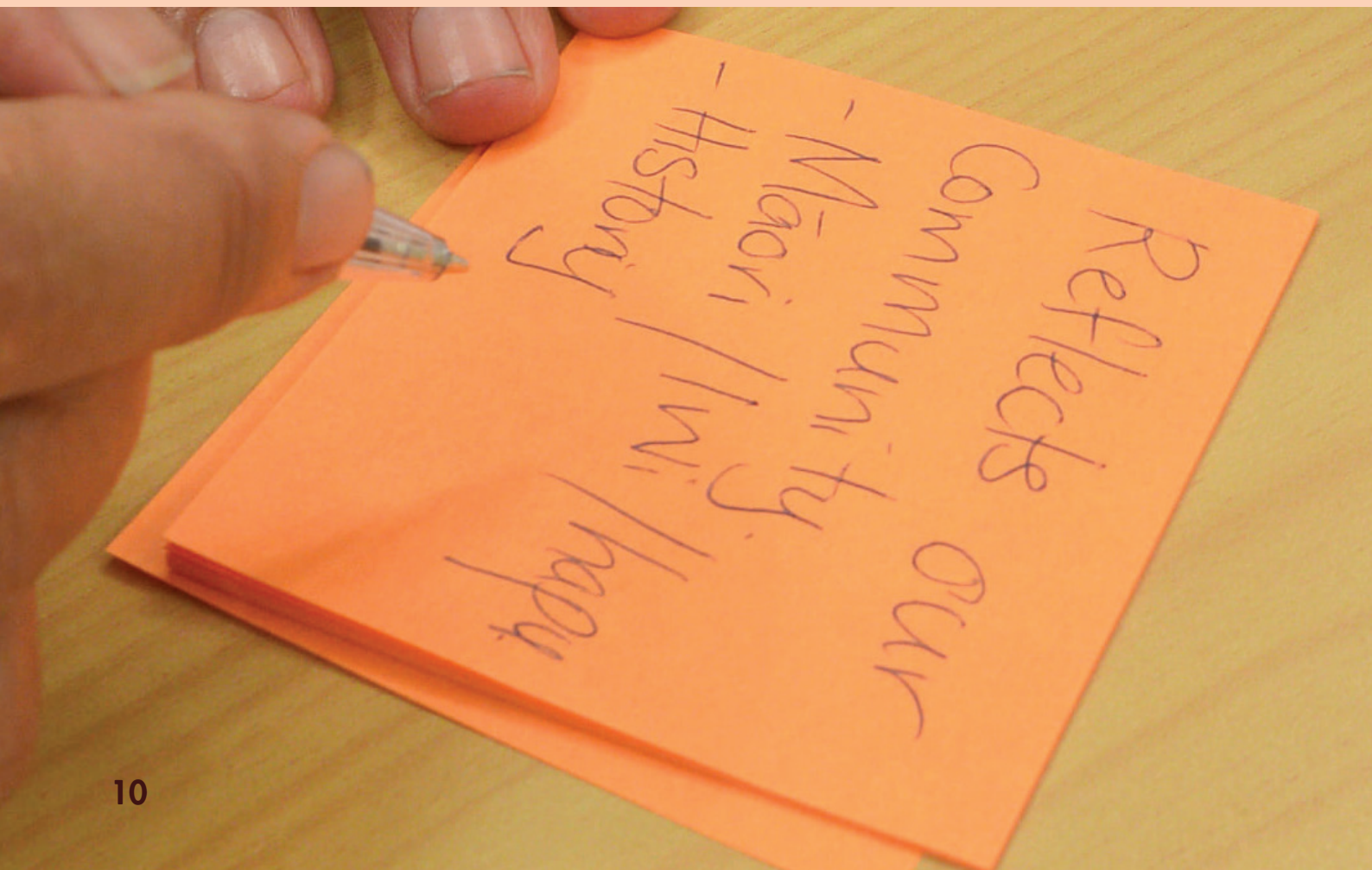
Open invitation workshops were held on 9th March 2021 at The Centre, Raetihi. One workshop was held in the morning and repeated in the evening. The workshops were arranged to enable people to sit at tables together and to share their thoughts and aspirations as they worked through a series of questions.

Community Survey

A survey was developed and loaded to SurveyMonkey and shared to the UCT and RDC web-pages and posted to the Raetihi Community Hub Facebook page. Hard copies were dropped off at the Raetihi Service Centre, Angel Louise Café, and the Coach House café. There were 14 responses received from the survey.

Rangatahi Survey

A survey was developed and conducted with 176 young people at local kura. Of these, 96 respondents were from Raetihi, 45 from Ohakune and 35 others. The young people identified a number of activities that were important to them.



Stakeholder Hui

Throughout the main period of public consultation - March 2021 to June 2021 - all key stakeholders, community groups, organisations and businesses – as identified in the Communication Plan – were contacted and hui arranged to obtain feedback on the project. Meetings were held with: Dream Makers Trust & Te Puke Karanga Hauora, Raetihi & Ohakune RDC Staff, Raetihi Playgroup, Raetihi Promotions, Raetihi Volunteer Fire Brigade, Raetihi-Ohakune Rotary Club, RDC Councilors, Ruapehu Health, Ruapehu REAP, Theatre Royal Waimarino Charitable Trust & Phoenix Players, UCT, Volcano Vibe Collective, Waimarino Budget Service, Waimarino Community Toy Library, Waimarino Health Centre Team, Waimarino Museum, Waimarino Wellness Centre Project, Waimarino-Waiouru Community Board and Waimarino-Waiouru Youth Council.

3.2 KEY CONSULTATION OUTCOMES

Over the course of the consultation period over 360 individuals were directly engaged across the broad range of techniques utilised. All their diverse range of views were heard, acknowledged and recorded and inform the recommendations made in this report. Below is a summary breakdown of views shared and expanded information can be found in the Appendices section of this document.

Media Releases

An initial press release which appeared in the Ruapehu Bulletin drew feedback from two people. Their key points were:

- A hub would be beneficial for Raetihi and bring all people together
- Concern about what will be taken into consideration when making the decision on the facility; money is not coming back into Raetihi
- Concern about gross over expenditure
- Concern that Council is continually cutting costs in Raetihi
- Swimming pool is a critical asset and needs to be resolved before a community hub is built

- Is there a town revitalisation plan for Raetihi - where is it? (see Appendix 25)

Public Events

The hub needs to be central, open in the evenings and welcoming and supportive of all members of the community including those whānau with disabilities. It needs to be a multi-purpose space that can cater for running courses and training, utilise the latest in technology and allow for dedicated spaces especially for youth, pēpē and kaumātua (see Appendix 3).

Community Workshops

The space needs to warm, welcoming, accessible, and safe, for all and a place where community can share and celebrate with each other, create unity in diversity - Pride of town - Uenuku country. A number of dedicated spaces were identified including but not limited to: for young people to come together; for confidential work; work hub; hot desks; hold a meeting of any sort; an opportunity to Integrate and bring together a number of organisations into a multi-purpose space for e.g. REAP; Council; Library; Post; Technical IT support provided; ITOs; Central meeting space; info centre; multipurpose space; commercial kitchen for cater and courses was also identified (see Appendix 1).

Community Survey

Overarching findings from the survey responders was they see Raetihi as a place that is about people and is a friendly town and want a space where people can come together – providing opportunities for young people; accessible to all and with provision for diverse community spaces. The building and surrounds need to reflect Raetihi, be open, welcoming, warm and inviting. It needs to be a place for groups and people that is undeniably reflective of Māori. A number of dedicated spaces were also identified including but limited to: large community kitchen; large community area; rooms for diverse activities; work spaces; youth space; computer hub. The majority of responders said they use the current RDC service centre for vehicle and dog registration purposes (see Appendix 23).

Rangatahi Survey

Rangatahi identified a number of specific spaces including but not limited to: a gym catering for variety of sports activities including mixed martial arts, volleyball, rugby axe/knife throwing, basketball and netball; gaming room; movie theatre; chill out space; study space; art room; music & live performance; pool table; kitchen. 37 respondents indicated they would attend school holiday activities if they were made available (see Appendix 24).

Stakeholder hui

Individual meeting was held with several individuals and groups representing key stakeholders. Key points expressed at these meetings were:

Dream Makers Trust & Te Puke Karanga Hauora

Rangatahi deserve a space of their own. Need to be able to offer development programmes; opportunities for learning skills and developing strengths. A multi-purpose flexible space with a central food kitchen where people can share kai and come together (see Appendix 9).

Raetihi & Ohakune Ruapehu District Council Staff

The community hub would need to have space to continue to offer NZ Post; Waka Kotahi NZ Transport Agency; BillPay services; Council and library services. Concerned that many people don't drive and struggle with how to use technology. They need support to do this their needs to be provision for digital learning provided within the hub. Many people don't have access to technology so are locked out. Need a space for young people open from 4pm – 7pm with good youth development support and a range of activities (see Appendix 10).

Raetihi Playgroup

Community Hub would provide the opportunity for the Toy Library and the play group to merge. Need changing facilities and ensure space is open plan so you can always see children; facility to heat bottles and food. Access to an outdoor play space would be good. Storage of equipment.

Raetihi Promotions

Keen on telling the stories on how Raetihi has evolved over time. Many local notable people were identified. There needs to be large and small meeting rooms; with a large convention centre type space; a local history corner; offices for hot desking and quiet spaces; the rooms need to be soundproof. The hub needs to be the centre for events and meetings; hosting music; arts etc. The Information Centre would be happy to move to the hub (see Appendix 11).

Raetihi Volunteer Fire Brigade

Community space needs to be able to hold large gatherings along with break out rooms. A place for young people to go in the evenings where they are supported, encouraged, and mentored (see Appendix 13).

Raetihi-Ohakune Rotary Club

Location of the hub – needs to be central with the potential for a conference/tiered seating and as one building with breakout spaces. A withdraw room that can be hired, hire specific parts of the building or the whole thing depending on the size of the event; night classes with creative things (see Appendix 16).

Ruapehu District Council - Councilors

Specific requirements for the proposed venue are: community information services e.g. rates, licenses, permits etc; conference room; library; meeting rooms; offices (two shared offices with four hot desks); PostShop, with 100 boxes (current level) and dispatch capabilities; small Police area and/or kiosk; technology & computer area (improving local digital accessibility); visitor information services; youth space (see Appendix 5).

Ruapehu Health - Managers

Why develop two spaces? The Wellness Centre will be offering meeting spaces for external providers. Talk about trying to link the two spaces together (see Appendix 12).

Ruapehu REAP

Would like to be able to offer training opportunities from the hub. A place to offer courses – on-line media resources would be extremely useful. A space to house 2/3 staff with offices and opportunity to use break out rooms. Ability to offer youth activities.

Can pay rent for the space, however, can't contribute to capital costs (see Appendix 14).

Theatre Royal Waimarino Charitable Trust & Phoenix Players

The Theatre Royal is a separate Trust that owns the theatre building. Phoenix Players is winding up and no other group is showing an interest in being in the theatre permanently. The theatre is a valuable asset, a Historic Place Category 2 listed building and it would be sad to lose it (see Appendix 17).

Uenuku Charitable Trust

Have 21 specific requirements recorded in the Key Stakeholder Meeting Report above, these include the need for a head office space, with offices for staff, conference room facilities large enough to hold AGMs with tea/coffee making facilities and break out meeting rooms (see Appendix 4).

Volcano Vibe Collective

Recognise the need for the community hub to be central so it brings people together; ability to hold outdoor BBQs; how to prepare food; Big commercial kitchen host events; Food hygiene courses. The facility needs to have central looking spaces with connections to each other although the spaces will be different – e.g., youth space; maker space; woodwork; open rooms; big commercial kitchen; ability to hold events; needs carvings to look like a marae. Uenuku to drive it. Needs a youth space. Expressed frustration that nothing happens in Raetihi (see Appendix 15).

Waimarino Budget Services

Their current building is going on the market. They would need soundproof rooms. The Trust can pay rent for the use of rooms as they do now (see Appendix 18).

Waimarino Community Toy Library

Warmer space where tamariki can play and interact with each other. Confidential rooms for counseling and play therapy. The current rooms are moldy (see Appendix 19).

Waimarino Health Centre Team

Community kitchen where classes for food things can take place. A kitchen and food are an essential part of a community. An accessible industrial kitchen. Develop a

dedicated youth centre with programmes. A kaumātua centre. Encourage people to feel comfortable in the space. Entertainment place there is nowhere to go to hold family gatherings (see Appendix 20).

Waimarino Museum

The buildings already exist in Raetihi. Maintain the facades and rip out the backs. Not in favour of moving the museum. Develop a place for young people (see Appendix 21).

Waimarino Wellness Centre Project

The project came from the people. The Wellness Centre will prioritise care issues and take a holistic approach to well-being. Wellness centre is the place for social issues – community hub is the place for social connection. A Youth space is appropriate in the social connector space. Commercial kitchen at hub would be great with a gigantic meeting space. A sports hub would be fully supported by the Wellness Centre (see Appendix 22).

Waimarino – Waiouru Community Board

Require the hub to have catering facilities, bookable spaces, everyone is welcome, hosting of annual festivals and spaces for a wide range of diverse programmes and activities that reflects the diversity of the community – a one stop shop that is safe and healthy with good leadership.

YOUR ASPIRATIONS ARE THE INSPIRATION!



Waimarino – Waiouru Youth Council

The Youth Council had a large wish list of items they would like. Many of the items on their list would be accommodated in a community hub like bean bags, a comfortable place to sit, watch and just talk to friends. Books/board games, computer room/design room – 3D printer; game

consoles; free WiFi un-throttled; meeting spaces both large and small. The young people indicated at the youth council meeting and within the survey that indoor sports activities were extremely important to them, and they would like a space where these activities could take place (see Appendix 6).



3.3 PHASE ONE RESPONSE ANALYSIS SUMMARY

ASPIRATIONS

- A place for people to connect that is safe & inclusive
- A central focal point of the community; accessible; comfortable warm; welcoming to all;
- Kaumātua space; convention/ conference space with offices; meeting rooms (that are soundproof) and can be used by different groups & small businesses; commercial kitchen;
- Digital access – WiFi IT technology focus and support/up-skilling provided
- A place for young people – they are the future
- Information hub; opportunities for activities & training
- A 'keeper of the knowledge' space including archives area
- Reflects the maunga and awa – Uenuku centered

INSPIRATIONS

- To reflect all things Raetihi
- A place for the whole community to come together
- Opportunity to unify the town in diversity
- A central focal point in the area that will enhance the whole town
- Share the stories of Uenuku; maunga and awa; geology of the area; volcano; timber town
- Gateway to Whanganui awa and maunga

CONCERNS

- A lot of talking not much action
- Who makes the decisions?
- A new building could take away from the historic look of Raetihi, maintain the facades of the existing buildings and re-purpose the back.
- How will it work with the various interest groups/parties?
- Who will run it?
- Where will the money come from & will there be an increase to rates?
- What will happen to the theatre?

APPENDICES

APPENDIX 1

RAETIHI COMMUNITY WORKSHOPS 9 MARCH, 2021 @ THE CENTRE

What are you feeling right now as you think about a community hub?

This is for everybody; excitement; positive; optimistic; cautious; comforted; nervous; hopeful; how will the money be distributed?; anxiety – political?!; confusion; who decides?; how it'll work with various interest/parties; is there going to be an Increase to rates?.

What is important to you and your whanāu/family when you think about the opportunity of using a new community hub in Waimarino/Raetihi?

- Bring the Toy Library into space
- Develop a space to showcase local artist's work; Hang and create exhibition that can change out – students/art/ things to make easy temporary
- Events that bring in the country communities; building open- with spaces – whare shape; Something that can be used for sport, a multi-purpose space
- Finding office space – retro fit rather than new build; hot desks for work – cubicles for people to work; a work hub – creating facilities – structure for an industrial centre
- Hub needs to bring in the public – tell the whole story – not just the settler stories; Design a permanent display – in the open; History boards; Concern a new building will take away from the historic aspects of Raetihi; incorporate the museum; museum open all the time
- Huge need for an appropriate space for confidential work
- Leisure facility more user friendly – slides/spa pools – pool is good make it better. Make the pool a year-round space – something to be used when the mountain is closed
- Library – warm space, be able to sit, school holidays programmes
- Look at the old buildings – land banking is an issue
- Main road would be a good location bring both sides of town together – best views of the mountain – orient to north towards the mountain; Courtyard framing the mountain; plaza space – trees water feature and sound stage
- Opportunity to create a space where people can use – warm/accessible/ hold a meeting of any sort/ is just one space
- Place for the community to come together – community has lost the ability to do that
- Raetihi history; develop a space that is appropriate and satisfying, for the community
- Sad if the hub distracted from the theatre
- Sound-shell – needs cover plus an area for musicians to leave their gear (college students have a band)
- The space to be the keeper of the knowledge – a place Raetihi residents want to go to search archives and local history
- Young people coming together/relaxing/hanging out; a need for young people to hang out. Youth space; youth services; bigger place for young people; no-where for counselor to work with young people.

Single most important thing?

- Commercial hub in town – encouraging of retail
- Conference meeting rooms – screens; projectors; commercial kitchen – for catering or cooking classes/ health conscious; budgeting; recipes
- Depicting timber being the gateway to Whanganui River, access to awa and maunga
- Encouraging of small businesses and self-employed
- Integrate bring everything together; REAP – advice; CV writing; employment; Council facilities – technical IT support; computers; post office – banking; budget advice; loan/ debt/mortgage information and advice; banking hub; information centre; NZ Post; library; community hub for groups
- Provision of spaces for a wide variety of industry training providers to host industry training courses from MITO Agriculture; ITO – forestry, agriculture; Barista; chainsaw safety. Multipurpose – learning - REAP – driving license education' trades; gymnastics etc; crafts; music – instrument – learning 7-70 +years
- Safe environment
- Sharing the diverse farming stories from around the district
- Uenuku - pride of town.

This Raetihi Hub will look like?

- Make the hub the communities entertainment centre; providing a music suite and attention needs to be given to the acoustics in the building. Include break out rooms; spaces; ten pin bowling; movies
- Provision of spaces for kaumātua, young people, the ability for hot desks and places for people to work remotely
- The attendees at the workshop want the hub to be the Uenuku hub for the community – pride of town
- The Hub to be a multi-functional space that supports and is available for us for a diverse range of activities; from over 70s renewing their drivers licenses; educational opportunities; a place for government agencies to attend and provide services into the community
- The Hub to reflect Raetihi – the physical environment - the maunga and awa
- The Hub will be modern with a nod to the past using solar powered, sustainable materials and environmentally friendly
- The space needs to integrate with landscape by the use local materials provided by local suppliers, reflecting the geology of the area – uniquely volcanic area the river link. The hub will have themes that reflect Raetihi from wool, rocks, agriculture the flora and fauna of the area
- The space to be open and informal
- The space will depict or mirror Ruapehu; Tongariro and Ngauruhoe
- The use of local stone; timber, carving – all things Uenuku related
- Timber gateway to river and maunga.

The single most important thing?

Accessible; homely; inviting; open; people; welcoming space for everyone.

Our aspirations are the inspiration – how are your community using it?

- Aim to have people stop and spend time in Raetihi getting to know the place
- Develop a walk through interactive of historic stories both within the hub and as an app for spending time out in the district. Reflect Uenuku-tanga; historic stories. Town tours guided to key areas
- Have the hub join up with the highways: Pipiriki and the Paraparas (SH4)
- Include cultural experiences from the museum and other cultural activities; live performance, art, a multi-purpose space for live presentations, singing, dancing, kapa haka, practical hands-on carving – a piece of Raetihi (taonga)
- Knitting; theatre drama; history; community meetings; education training; classes; indoor-all-year platform; activities for all sections of Raetihi
- Share Raetihi experiences from an eel hatchery, feeding eels and a smokehouse for preparing eels; the impact of opossums; nesting pairs of native falcons; support the development of a Kiwi sanctuary
- Show case views - Ruapehu – ki uta ki tai – suit the town as it is now. Access to the Mākōtuku
- Support Services available to the whole community from budgeting, parenting courses, youth activities; place for sole parents to come together.

Why is it important?

- Community sharing with community
- Show what we have to offer
- To bring our town alive
- To showcase Raetihi
- Unify the town in diversity.

5 years' time

- Eruption, avalanche – showcase geological information
- Events activities calendar
- Guaranteed local employment
- Heaps of sports going on
- Hooked on history – simulator that shows the past, present, future, milling, hill country, farming, lahar, skiing lessons
- Movies cranking all year
- Room for expansion
- Surf pool
- Trout fishing pools.

APPENDIX 2

WRITTEN SUBMISSIONS AND GENERAL FEEDBACK

- Beautiful pool
- Common sense
- Concerned about what is taken into consideration
- Concerns on gross over expenditure
- Council chambers and Drs house have fallen into disrepair
- Council is continually cutting costs in Raetihi
- Council sold off assets at least \$1m from Raetihi and Ohakune
- Establishing businesses in town is difficult
- Health centre is critical
- Is there a plan for Raetihi? Where is it heading?
- Money is not coming back to Raetihi
- Need to look at job creation and employment opportunities
- On-going running costs of a community hub
- Other issues before the hub are even considered
- Swimming pool heating – pool had a feasibility study went out to tender three tenderers – community is told what they are getting.
- The Hub being proposed for Raetihi should be beneficial to all residents of the town, offers a raft of services and programs to the public, and be the major focal point for all Raetihi business and social groups to come together as one – a central gathering and/or meeting point in which all residents can be proud of
- The hub is rubbish
- Uenuku – should keep away from council – the council will let them down Uenuku beware.

APPENDIX 3

PUBLIC EVENTS FEEDBACK RECEIVED

Raetihi Christmas Festival

- A central hub would be useful
- Central place; important to have a place for people to come together; meeting space for young and older people; technology space; food;
- Community volunteers organise everything in Raetihi
- Good to have a place in town and what about indoor sports?
- Good to have a place where community can come together
- Good to talk more
- Interested
- Looking to move back to Raetihi
- Meeting space for young people; a place to share kai; play and be together. Rise up Raetihi
- Need a place in town to get together. Many people work at the mills and need a central gathering place
- Place for people to connect with each other; connections/coordination across activities as well as connections to trades people. Fibre and digitally connected.
- Pub is a problem and needs to be gone
- Why have they got someone from out of Raetihi doing this work? Why not a local?

Waimarino A&P Show

- A space that is welcoming and supportive of all members of the community – where all people are welcome
- A youth hub
- Bean bags
- Big screen with events and activities in and around Raetihi updated with everything that is happening
- Citizens Advice Bureau – getting information – a community law out-reach service

- Central place
- Connections and coordination between trades people/ ITO's and young people.
- Counseling/ confidential soundproof spaces
- Courses – barista training; food preparation
- Covered sports facility
- Encouraging of activities and people coming together
- Fibre/SG/Video games
- Government agencies in a central accessible place; other Government agencies visit
- Helicopter Pad
- Holiday programmes
- Hot desk working space
- Kaumātua space
- Need a central place where the community are kept informed and information shared
- Need a community centre
- Need Doctors and chemist
- Need space for young people to hang out
- Needs to be open into the evening – library in Raetihi closed at 4pm so when young people return from college they can't go to library.
- No continuity of things – projects get started and not finished
- Opportunities for activities to take place that support people with disabilities in the community or the carers of people with disabilities
- Place for people to connect with each other
- Place for young people to come together
- RDC Economic Development staff member
- Run courses/parenting/social get togethers
- Servers
- Socialise
- Support for enrolling into tertiary education
- Town needs a central space
- Training opportunities
- Transport is essential if you need to pick up a prescription from Ohakune. People not uplifting their medication like they need to.
- Tutoring
- TVs
- Video games set up
- Welcoming and open to people with disabilities
- Youth council co-ordinator.

APPENDIX 4

UENUKU CHARITABLE TRUST

- Annual General Meeting sized hui space
- Archives/Research room
- Boutique movie/cinema space
- Conference room with kitchen
- Design and feel need to reflect local Māori
- Display repatriated taonga/exhibition floor space
- Eating area
- Food cart/café (Uenuku run)
- Good parking/designated Iwi parks
- Kaumātua space
- Links with existing community facilities & awa
- Meeting rooms
- Open 7-days-a-week and evenings
- PSGE – Head office – five offices/manager & admin staff/ - potentially a more comfortable space
- Space to tell stories
- Toilet/showers
- Uenuku art/pou
- Volcano cultural component
- Youth space.

APPENDIX 5

RUAPEHU DISTRICT COUNCIL

- Community information services e.g. rates, licenses, permits
- Conference room
- Library
- Meeting rooms
- Offices – two shared offices with four hot desks
- Post Shop with 100 boxes (current level) and dispatch capability
- Small Police area/kiosk
- Technology/computer area (improving local digital accessibility)
- Visitor information services
- Youth space.

APPENDIX 6

WAIMARINO-WAIOURU COMMUNITY BOARD - 8 APRIL, 2021

What are you feeling right now as you think about a community hub?

- Excited
- Supported

What is important to you and your whānau/family when you think about the opportunity of using a new community hub in Waimarino/Raetihi?

- Catering facilities
- Cultural awareness
- Drug free
- Healthy space/food
- Look and feel is important
- Patch free
- Project the positive aspects of who we are and our future thinking
- Reflective of the Community
- Risk free
- Strong leadership and monitoring to ensure gangs don't take over
- Will it fit us all in?

This Raetihi Hub will look like?

- Art pieces around town
- Business hub
- Centre of town

- Changing space
- Clean, bright, spacious, warm, living plants
- Concerts/music
- Don't lose heritage town – historic; enhance; historic Raetihi - honouring the past but in a modern way/use of existing facade – building behind/wide main street
- Energy efficient model/sustainable – solar power/wind turbine/environmental statement/solar wind power – function off the grid; living roof
- Emergency Operations Centre
- Engagement with Council
- Food
- Good WiFi
- Horse rides/water park
- Local showcase
- Lots of natural light
- Māori designs
- Modern
- Next to police station
- No more buildings in middle of town
- Old type school building
- Our town
- Place for kids to go after school
- Placed on main road – pub location + SH4
- Reflective of the community; reflects our community – Māori/iwi/hapū/history
- Represents maunga; represents Raetihi; represents us

- Restaurant/café
- Sports arena – equestrian/motocross/skiing/commando laser course/orienteering
- Theatre
- Theme park
- Timber/stone/corrugated iron
- Vibrant, colourful, playful
- Waharoa
- Welcoming
- Youth hub

Our aspirations are the inspiration – how are your community using it?

- Access – wired focus/ tech IT/tech for kids and adults/support for banking and on-line services
- Adult education
- Advertising – rolling screen on front window – buy a space; let people know what’s going on.
- After school care and fun learning spaces
- All welcome
- Annual festivals to celebrate our cultural diversity
- Art space/gallery; arts and crafts spaces
- Big brother and sister’s programs
- Bookable meeting space; concertina doors; community lounge space for simply “hanging out”; conferences
- Catering – commercial facilities
- Celebrating successes – time to shine
- Classes and training
- Community engagement
- Community gallery
- Connection - physical to well-being centre
- Dance classes/meditating
- Early history
- Fun

- Kaumātua/elderly space
- Host large events
- Interactive screens giving a historical timeline
- I-site/info centre
- Library
- Live music stage/performance/local stories- who we are
- Motor-home Park
- Museum
- One stop shop
- Reading room
- Retail/small business – café - restaurant
- Safe space
- Small groups
- Spoken word
- Sound system while you are transitioning throughout
- Teaching/learning space
- Working space – incorporating it into the hub/workshop space – trade centre
- Youth facilities

Best thing about a Community Hub?

- Beautify town
- Bring more people to Raetihi
- Focal point of our community
- Good timely investment in Raetihi
- Impressive enough to draw people into it
- Invite other people into our community to work and live
- Pride
- Revitalise our community
- Safe and inclusive
- Tell the story
- The Royal theatre

5 years’ time

Arrowtown of the Ruapehu

APPENDIX 7

WAIMARINO-WAIOURU YOUTH COUNCIL - 12 JUNE, 2021

- A pet to take care of and learn to take responsibility
- A quiet room for work and reading
- Adventure park
- Ball pit
- Basketball hoops (indoor)
- Bathroom
- Bean bags/comfortable/place to sit, watch and just talk to friends.
- Books to use/board games
- Chargers for all things
- Climbing wall/climbing club
- Computer room/design room – 3d printer/ Game consoles
- Diving club
- Drama clubs
- Finish BMX track
- Food/drinks
- Free WiFi – super fast unlimited and un-throttled
- Gaming
- Gym space
- Heating or hot drinks on cold days
- Hydro slide
- Indoor ball court/indoor games
- Lounge area and TV
- Meeting spaces large and small
- Mini golf
- Movie marathons; movie nights/days
- Pizza oven
- Pool tables
- Raetihi skate park
- Roller skating rink
- Safe area/safe space
- Ski simulator
- Sleeping room
- Speakers - music
- Sports – equipment to encourage participation.
- Table tennis/tabletop games
- The floor is foam.
- Trampoline Park and foam pit
- Youth space with adult guidance

APPENDIX 8

RAETIHI PROMOTIONS - 3 MAY, 2021

Story telling on how Raetihi evolved

- A film of the roots – people come here and get a feel for how Raetihi came about
- Aunty Pani
- Carl Perkins – House of Shem – guitar collection
- Coming up from Pipiriki and the beautiful journey
- Develop Raetihi monopoly
- Presentations- films showcasing Raetihi
- Relatives – people connected – talk about family connections to places
- Tom Mowat – capturing local stories – the social history of the community
- Treasures – people want to engage with Uenuku treasures – connecting to Māori history

Facility

- Big and smaller meeting spaces
- Convention centre – break out rooms/ meeting rooms
- Ensuring it showcases other parts of Raetihi.
- Gym – promote health and well-being in our community
- Have a space to search your history – local history corner – mud ducks – local on the river
- Have offices for people to go and work – make sure it is soundproof
- Having fun together
- Musical instruments/arts/crafts
- Needs to be a centre for events and meetings.
- Quiet spaces
- Spaces for aerobics/yoga
- Spaces for new mothers – to have post-natal and pre-natal meetings.

Enviorns

- Close to the river
- Locate where the pub is
- Snakes and ladders scenario – have it coming up the centre of town – paint the streets and direct people towards the eagle's nest – looking back down towards the river
- Township is beautiful

Potential

- A farming centre – be open and transparent – open to explore – explore the history of farming in the district – encouraging people to be open about farming
- Bees
- Computer literacy development
- Connectivity
- Hall of fame – digitally
- How can it connect into the farming community?
- Information all over the walls – display information
- Operate in a really different way – fresh start in a new hub
- Opportunity to meet with people – people are already traveling to existing activities.
- Skill development and support for the rural community in compliance training and development
- Somewhere the rural community can go as a farming/info hub
- Somewhere to go for an info-hub
- Source for the promotion of wool/ food where does it come from how – critical to NZ.

APPENDIX 9

DREAM MAKERS TRUST & TE PUKE KARANGA HAUORA 10 MARCH, 2021

The Dream Makers Trust provides programmes to youth in the Manawatū/Whanganui - Ruapehu and Rangitikei areas that use a strengths-based approach, incorporating best practice, involving the family, and focusing on positive outcomes.

- A proper audio-visual centre
- A space for young people that they can own. Rangatahi deserve a space of their own
- A space to run youth development programmes for young people; storage so the equipment needed can remain in the building ready for use each day; a centralised space
- Chemist distribution centre – medications are a major issue. People can't afford to travel to pick up medication so don't take it

- Current pub location – get rid of pub, build centre there
- Designated central space in town and the building
- Food kitchen – a central food kitchen where people can share kai and come together - learning skills and developing strengths
- Meeting spaces – places for small group meetings; counseling spaces; opportunity for small group learning. The space needs to be multi-purpose and flexible
- Regular transport service – Dempsey Buses
- Safe place for young people to go
- Space to book and utilise – technology centre. Technology person on hand
- Toilets and showers – not unisex

APPENDIX 10

RAETIHI & OHAKUNE RUAPEHU DISTRICT COUNCIL - STAFF 11 & 12 MAY, 2021

- Many people don't drive and as Raetihi has an aging population many of whom struggle with using technology they need help with digital literacy. This would include offering access to training on how to access bank accounts and undertake on-line banking; access to government agencies – if you don't have access to technology, you are locked out
- Museum and Toy Library need to be in the new hub
- Needs good i-Site to share all things Raetihi and down into the valley
- Needs to be a light airy, warm space with no dark corners
- Needs to be central in the CBD. There is no space for the community to come together
- Needs to have a commercial kitchen where people can come together with the potential for training and development opportunities around food
- Offering of activities; arts and crafts; educational courses and training opportunities; provide support for young people developing their CVs or wanting help to apply to tertiary institutions
- Place for small businesspeople and groups to be able to operate out of the space
- Rural homes - many don't have access to the internet
- The community hub needs to have a space to support young people. Currently the Raetihi Service Centre closes at 4pm, the library connects with young people until they are eight years of age and when they go to college, they lose the contact with them. Hub would need to be open from 4pm until 7pm with a strong youth leader
- The space will need room to offer the NZ Post; Waka Kotahi NZ Transport Agency; BillPay Services; Council and Library services.

APPENDIX 11

RAETIHI PLAYGROUP - 17 JUNE, 2021

- A place to hire for holding fundraising events
- A space to rent for special occasions – there is no community hall in Raetihi
- Accessible toilets and showers
- Changing facilities. Space would need to be close to change rooms. If an outdoor space is developed this needs to be easily accessible from either inside or outside
- Have the floor of the facility be a product that the dance groups could use it
- Kitchenette – to heat bottles and make food for the children
- Moving to the Community Hub would provide an opportunity for the Toy Library and the play group to merge
- Open plan space where you can always see the children
- Outdoor safe play area would be great. A playground at the front that could have gates to ensure child safety
- Place to celebrate small people's birthdays safely – ability to use the toy library resources to share for parties
- Raetihi is a small town everything in one space would be good. Don't want to lose the theatre is it possible to incorporate the theatre? Improve space so there can be movie nights and live performances
- The floor where the play group and toy library are could potentially be the rubbery stuff – needs to be able to mop up and clean easily after use
- The space can be a pack away space so long as there is storage for the toy library – the space can then be used for other activities
- Toy Library would need a space to share and display toys
- Warm space for everyone to come out to.

APPENDIX 12

RUAPEHU HEALTH LTD MANAGERS 19 MAY, 2021

- Be useful to hold conversations with the Wellness Centre planning group on how the hub could link
- Conversations need to be had about the spaces being linked.
- Wellness Centre will be running quite a few sessions on health and well-being – complete shift in focus in support of people's well-being
- Why is a Wellness Centre and a community hub being developed? Seems pointless having two spaces.
- A place for young people that is open in the evening and they are supported, encouraged, and mentored
- Community space – needs to be able to

APPENDIX 13

RAETIHI VOLUNTEER FIRE BRIGADE 8 MARCH, 2021

- hold large gatherings. People can go for training session on various things. Break-out rooms and places for small to large meetings
- Open and accessible to everyone
- The Wellness Centre will have rooms for external use - no use having meeting spaces if they are going to be a duplication.

APPENDIX 14

RUAPEHU REAP - 26 MAY, 2021

- A space for youth activities – ensure youth activities are up and running for opening day and is a space young people can go to 'after hours'
- As REAP is a not-for-profit organisation it has nothing to contribute to the capital costs however can contribute to weekly lease payments
- Every town needs a hub
- Locate it somewhere in town by The Royal – this will set up performance space – wellness centre across the road and the hub down the other end of town
- On-line media equipment for on-line courses and evening courses to be able to run. A technology hub would be useful
- REAP – would like spaces to deliver programmes. They would be interested in an administration office. A place to house 2/3 staff. A space to store resources so they are available to the community. Children can utilise the resources they may need in the classroom. Would want to offer training opportunities from the hub, homework spaces and a library. A meeting space that comfortably seats 8 people through to a larger space. This would require a bookable system to enable the spaces to be shared by other organisations. A space for us to offer our programmes from
- Set up partners either side with the community in the middle.

APPENDIX 15

VOLCANO VIBE COLLECTIVE - 19 MAY, 2021

- Art development - enable kaumātua to come into space and support them
- Council needs to get the owners of the buildings to tidy them up – managed to change plan in Ohakune to do that – why not in Raetihi? Council needs to step up – even if it just means the owners clean them
- Facility needs to have central looking spaces with connections to each other although the spaces will be different – e.g. youth space; maker space; woodwork; open rooms; big commercial kitchen; ability to hold events; carvings - it looks like a Marae
- Need a youth space; gaming room – pin ball/table tennis; free; industry training opportunities – train young people up
- Nothing happens – talk, talk, talk – swimming pool is a good example of that. Pool needs to be a primary focus everyone would use it; swimming pool – aqua jogging – lane swimming – places for young people; heated pool all year round
- Recognise the need for the community hub to be central so it brings people together; ability to hold outdoor BBQs; how to prepare food; big commercial kitchen host events; food hygiene courses
- Recreation centre; gym; kitchen
- Social deprivation is very high – need opportunities for change; bring in inspirational people
- Utilise more of the facilities already around – what are they going to do with the shops – don't want waste – maintain the history of the place; Uenuku to drive it.

APPENDIX 16

RAETIHI-OHAKUNE ROTARY CLUB - 26 MAY, 2021

- Individual rooms and open plan space; withdraw room that can be hired – hire parts of the building or the whole thing depending on the size of the event; one building with breakout spaces night classes with creative things
- Location of the hub – needs to be in the centre; conference/tiered seating – groups can come and use the space; dance groups; constant users
- The Theatre – needs to be considered (Phoenix Players) need to keep the theatre going – it requires so much maintenance. Is there an opportunity for the theatre? The bones are good. Needs earthquake strengthening.

APPENDIX 17

THEATRE ROYAL WAIMARINO CHARITABLE TRUST & PHOENIX PLAYERS - 4 NOVEMBER, 2021

- A new kitchen is being installed at The Royal; seats are all movable
- No other group is showing an interest in being in the theatre permanently
- Phoenix Players is winding up at the end of the year and is currently rehearsing their final production
- The overheads on the theatre building are high
- The Phoenix Players has held productions over the years which have contributed to the operational overhead costs for the Trust
- The theatre is a Historic Place Category 2 listed building
- The theatre is a valuable asset would be sad to lose it
- The Theatre Royal Waimarino Charitable Trust owns the Theatre Royal building and has responsibility for all overheads
- There is no theatre in Ohakune or a place to show movies.



E TŪ WHĀNAU!

APPENDIX 18

WAIMARINO BUDGET SERVICES - 3 MAY, 2021

- A community law outreach service that visits regularly
- Can pay rent for the space – currently paying insurance/power etc
- Citizen's Advice Bureau is to be set up
- The building the service operates from is going on the market
- The service would need soundproof rooms.

APPENDIX 19

WAIMARINO COMMUNITY TOY LIBRARY - 17 JUNE, 2021

- A place that is warmer and where small people can play and interact with each other
- Counseling for children a safe and confidential space where therapists can support children get play therapy outside of a clinical environment. Using the community hub would ensure people confidentiality as people would be going to the building for a lot of reasons
- It would be useful to have a space where children can play and interact with each other
- Toy Library is moldy and they have little to no storage.

APPENDIX 20

WAIMARINO HEALTH CENTRE TEAM - 26 MAY, 2021

- A dedicated youth centre; youth programmes; training – ITO – work experience; students nothing to do – need youth programmes – a space that is just theirs; Safe space to gather at night with WiFi – supervised
- Community kitchen – classes for food things; kitchen and food are an essential part of a community; provide make food; cooking classes; easy and cheap; Some supervision; accessible industrial kitchen
- Coordinator on hand for bookings and ensuring safe space
- Day care centre is needed; run school holiday programmes
- Entertainment place – nowhere to go to hold a family gathering
- Free
- Gym – indoor activity space
- Kaumātua space; sit and get fit elderly are really marginalised
- Need to encourage people to feel comfortable; atmosphere in the building is critical; lunch time sessions; bring in trainers – develop programmes people will come
- Needs to be supervised
- Tech centre – people are disengaged and not up-to-date with technology; senior net classes
- Toilets/showers/laundromat
- Wellness centre – won't be able to accommodate everyone – more space needed for community activity
- Young mum's – involve food and sharing times, parenting courses.



YOUR ASPIRATIONS ARE THE INSPIRATION!

APPENDIX 21

WAIMARINO MUSEUM - 10 MAY, 2021

- A place for young people – somewhere for them to come to after school and hang out. There is no-where for young people to go
- A space for the elderly to be able to undertake activities
- Buildings already exist in Raetihi, maintain the facades, and gut out the back. Heritage NZ has indicated an interest in supporting Raetihi with the retention of these buildings. The building needs to reflect Raetihi and be nothing like the Ohakune i-SITE Visitor Information Centre. Needs to have photo displays inside telling the history of Raetihi.
- Demolish the pub and build a community building; room for the public, council meetings, district needs decent rooms to house these events in. Use the hub build as a catalyst for improving the street scape. A commercial kitchen and a library are necessary elements
- Important the hub is alcohol free
- Indoor sports space – basketball; tennis; cricket etc
- The facility needs a wet space for art groups, schools etc.
- The Trust is not in favour of moving the museum into the hub as they have the buildings required to operate from. The original building was the railway station. The museum needs better signage to attract people
- There are existing spaces in town, The Centre is only good for some meetings. The Raetihi Cosmopolitan Club can host 100 people maximum.

APPENDIX 22

WAIMARINO WELLNESS CENTRE PROJECT - 26 MAY, 2021

The project came from the people and the intention is to prioritise the care issues and take a holistic approach to well-being - engaging with the community again.

- A sports hub would be fully supported by the Wellness Centre
- All things health related – hot desk for consultations
- Architects have been engaged. Planning for a 2023 opening – build to start at the end of this year. Using the current building and building onto the back section
- Architects will be in town again soon might be useful to picture spatially where in the town the hub will be -the DHB land will have the Wellness Centre
- Commercial kitchen at hub would be great with a gigantic meeting space
- Education space after hours meetings
- Open to everybody
- Upstairs at the current wellness centre will be opened or cut off as it will be required for training and workforce development
- Wellness centre is the place for social issues – community hub is the place for social connection.
- Whānau Ora team will be working out of there. The workforce will all be under one roof
- Youth space – is appropriate in the social connector space.

APPENDIX 23

COMMUNITY SURVEY

- A hub would be beneficial for Raetihi and bring all people together
- Concerned about gross over expenditure
- Council is continually cutting costs in Raetihi
- Is there a plan for Raetihi? Where is it?
- Responder concerned about what will be taken into consideration when making the decision on the facility; money is not coming back into Raetihi
- Swimming pool is a critical asset and needs to be resolved before a community hub is built.

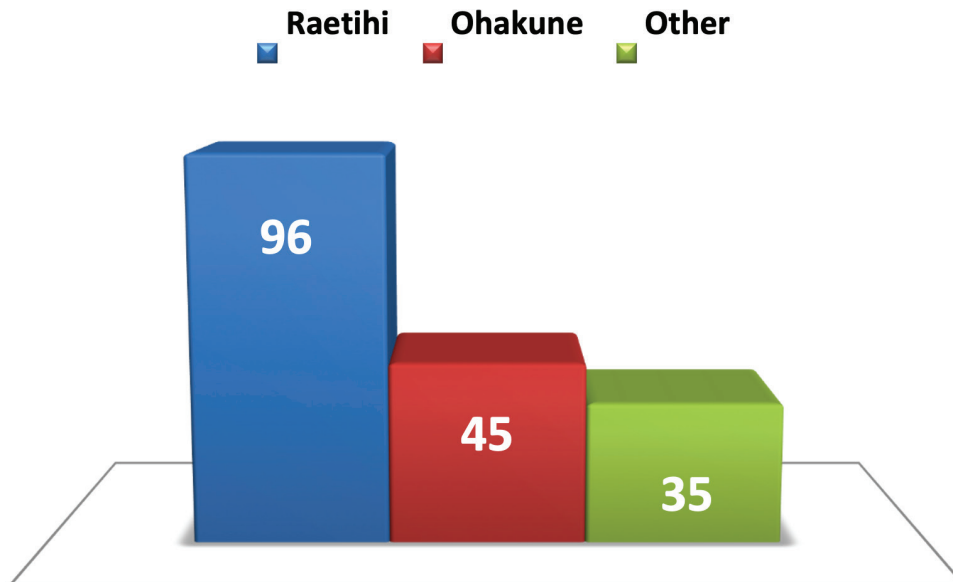
Community Survey Questions

1. How would you describe Raetihi as a community? Why?
2. How do you think the Raetihi Community can benefit from the construction of a purpose-built new Community Hub?
3. What is important to you and your whānau/family when you think about the opportunity of using a new community hub in Raetihi?
4. Why is it important to you and your whānau/family?
5. What do you imagine a community hub would look like from the street or when you go inside?
6. Why should it look like this?
7. What do you imagine a community hub would look feel like when you go inside? Why should it feel like this?
8. What are some of the key themes you would like to see showcased in the design of the Raetihi Community Hub?
9. Why are these themes important to you?
10. If there was absolutely no restriction on \$\$\$, what are ALL the things/spaces you would like to see included in a new community hub? Please list
11. If there was absolutely no restriction on \$\$\$ and thinking big, what is the single most important thing you would like to see included in the Raetihi community hub?
12. Why is the inclusion of this important to you and your whānau/family?
13. Do you currently use the Ruapehu District Council Service Centre in Raetihi?
14. If yes, what Services do you currently use at the Ruapehu District Council Service Centre? (Please list)
15. How often do you currently visit the Ruapehu District Council Service Centre? Once a week;
16. Once a month; Once every six months; Once a year; Other (please specify); None of the above
17. If no, why don't you currently use the Ruapehu District Council Service Centre in Raetihi?
18. What is your age? 5-11 years; 12-17 years; 18-24 years; 25-34 years; 35-49 years; 50-59 years; 60-69 years; 70-84 years; 85+ years
19. What is your gender? Female; Male; Gender Diverse; Other (please specify)
20. Which ethnic groups do you affiliate with? European; Māori; Pacific Peoples; Asian; Middle Eastern; New Zealander; Other (please specify)
21. What does you whānau/family look like at home? Single – living alone; Solo parent with tamariki/children; Couple without tamariki/children; Couple with tamariki/children; Other (please specify)
22. As this consultation continues for the Raetihi Community Hub, would you like us to keep in contact with you with any updates and other opportunities for you to share your opinions? Yes; No
23. If, yes to Q21, how would you like us to keep in contact with you? Phone – what phone number would you like to be contacted on; Text – what phone number would you like to be contacted on?; Email – what email would you like to be contacted through?; Mail – What address would you like to be sent mail?
24. Are you willing to share your name? (Note: the information you supply in this question is confidential and asked solely to help the Raetihi Community Hub Consultation Project Cathy McCartney ensure as many locals as possible have been given the opportunity to participate in this survey). Yes, What is your name?; No

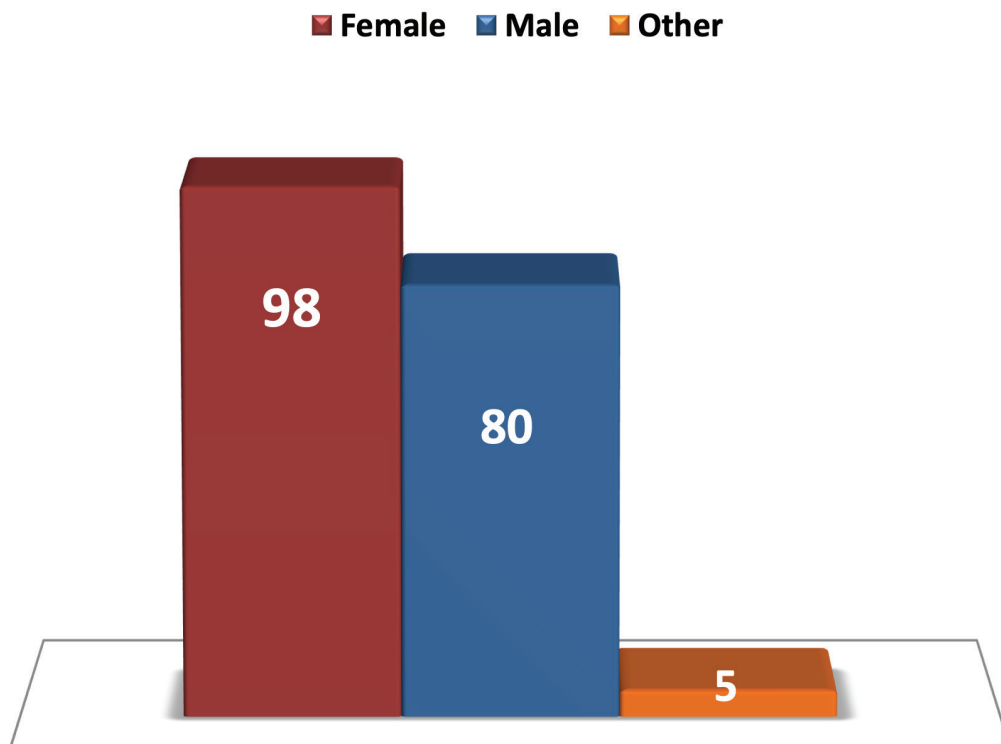
APPENDIX 24

RANGATAHI SURVEY

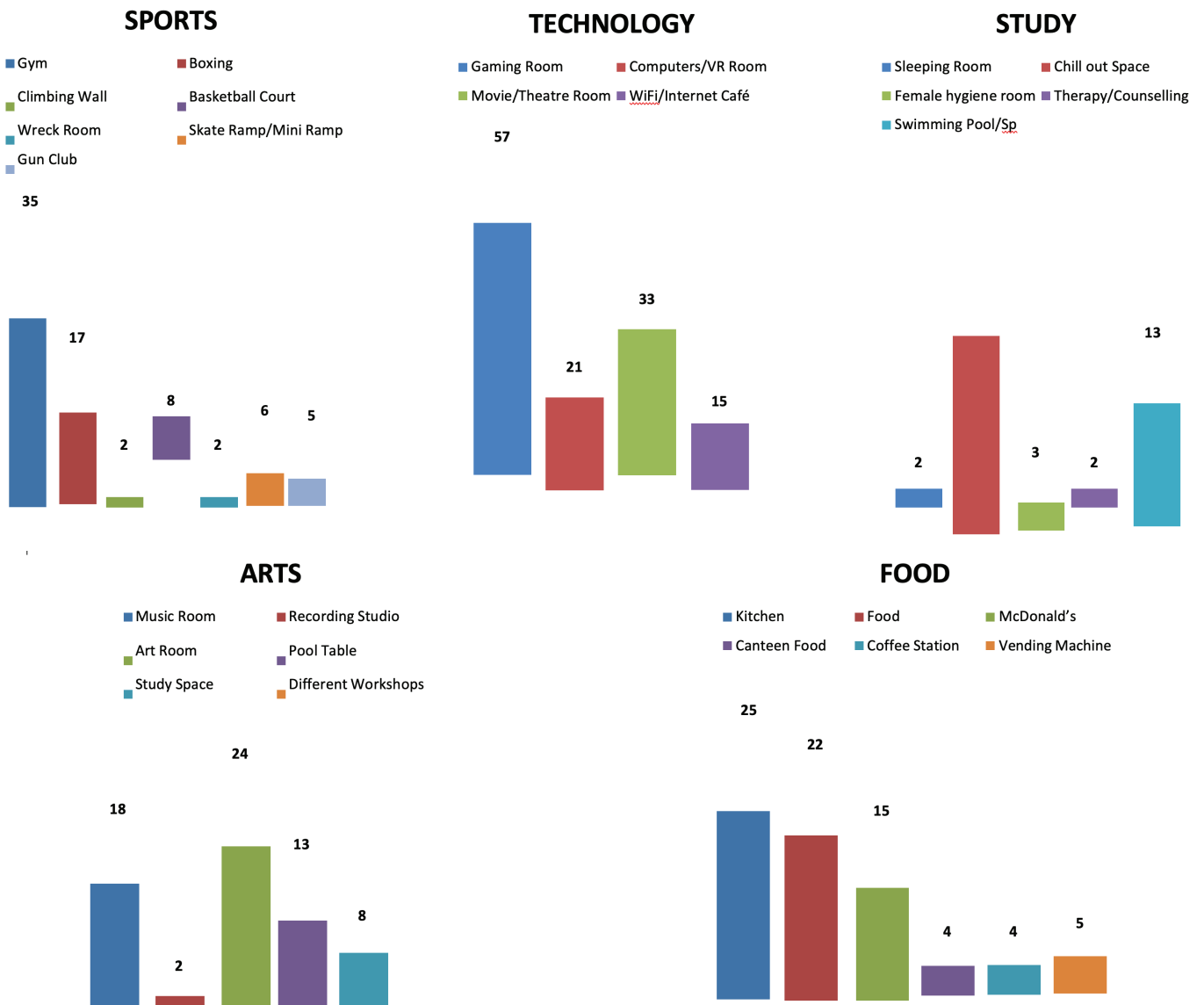
Question 1: Question 1 was regarding the students Location. Where they live: Raetihi, Ohakune or Other. Most students were from the Raetihi community and majority are between the ages 13-17 years.



Question 2: was regarding the student's gender, the majority of respondents identify as being female.



Question 3: Question 3 The students from all ages and genders were asked what facilities they would like to see in their Youth Space. What Facilities would you like to see in a community youth hub space?

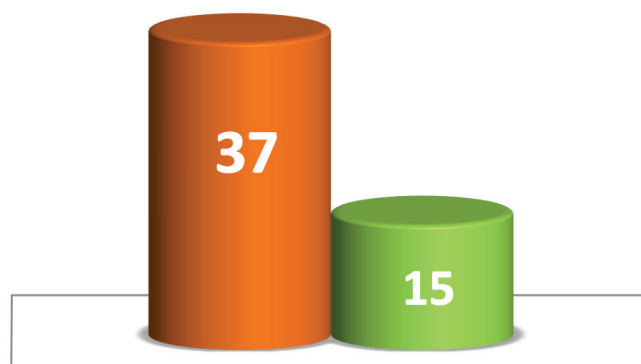


Students also shared a number of one-off suggestions: Burger King; Hockey Field; Indoor sports area; Mechanical Bull; Rugby Stadium; Separate space for seniors; Sports Tournament; Swimming Pool; Tuck-shop; Volleyball Court; Wreck Room

Question 4:

YES NO

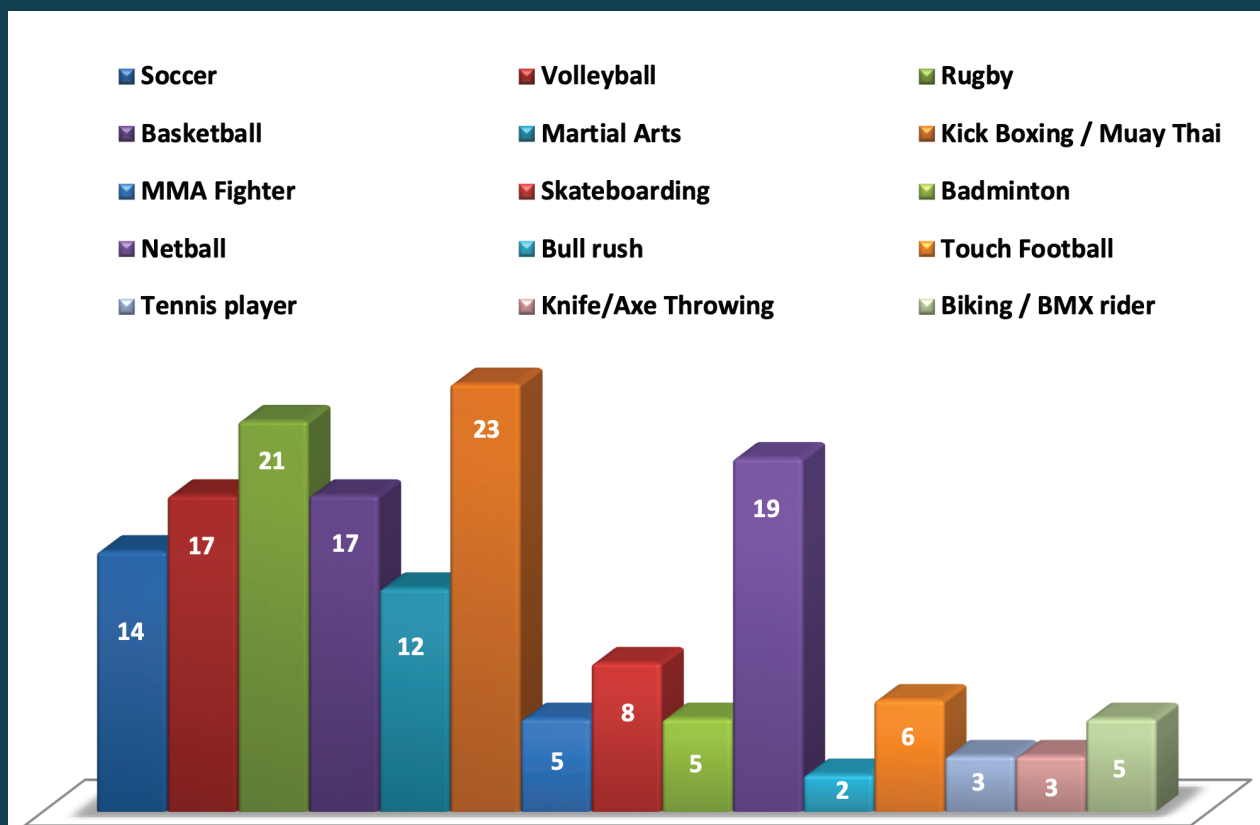
Students were asked if there was a school holiday programs available, would they attend it?



Question 5, Each student was given the opportunity to express their dream or aspiration. If you had the opportunity to be anything you want, what would it be?

- Accountant
- Actor
- Actress
- Air force pilot
- Animator/ Drawings
- Artist
- Barista
- Basketball ball
- Beautician
- Being rich
- Billionaire
- BMX track
- Boss Gamer
- Boxer
- Business man
- Carpenter
- CEO
- Chef
- Computer tech
- Dancer
- Designer/ architect
- Diving instructor
- Doctor
- Drummer
- Entrepreneur
- Farmer
- Fix technology
- Flight attendant
- Fly and be wealthy
- Football player
- Gaming ball
- Guide
- Gymnastic coach
- Have money
- Helicopter pilot
- Horse rider
- Hunter
- Interior/exterior designer
- Kick boxer
- Lawyer
- Make movies
- Manager
- Model
- Mohammad Ali
- Motor cross rider
- Music that earns money
- Musician
- Nature lover
- Navy
- Netball player
- Nurse
- Painter
- Paleontologist
- Pastry chef
- Person that makes it
- Personal trainer
- Photographer
- Police officer
- Politician
- Pro drifter
- Pro skateboarder
- Protagonists
- Psychiatrist beats
- Rap artist
- Real estate agent
- Rugby player
- Scientist
- Silver ferns player
- Singer
- Soldier
- Song writer
- Squash player
- Super market worker
- Swimmer
- Travel tourism
- Traveler around the world
- Vet doctor
- Welder
- Worker
- Yacht captain
- YouTuber

Question 6, Students were asked what sports they would participate in if they has a sports space/ sports centre. If you had a community sport space what sports would you see yourself doing?



APPENDIX 25

MEDIA

RAETIHI
COMMUNITY HUB
CONSULTATION
'20-21

UENUKU
RUAPEHU DISTRICT COUNCIL

E TŪ WHĀNAU!

FOR MORE INFO HEAD TO | www.ruapehudc.govt.nz
www.uenuku.iwi.nz
facebook.com/RaetihiCommunityHubConsultation'20-21

HE AHA WHAT? RUAPEHU DISTRICT COUNCIL (RDC) AND UENUKU CHARITABLE TRUST (UCT) ARE WORKING TOGETHER TOWARDS CREATING A SHARED MULTI-PURPOSE COMMUNITY HUB FOR THE RAETIHI AREA TO PROVIDE FOR THEIR SEPARATE ACTIVITIES, AS WELL AS FOR PRESENT & FUTURE COMMUNITY ACTIVITIES. THIS ROBUST CONSULTATION AND ENGAGEMENT PHASE WILL INSPIRE THE DEVELOPMENT OF A TRULY 'PLACE-BASED' FACILITY THAT IS INHERENTLY INTERCONNECTED WITH THE SURROUNDING ENVIRONMENT AND COMMUNITY.

ĀWHEA WHEN? THERE WILL BE A NUMBER OF OPPORTUNITIES TO SHARE KŌRERO THROUGHOUT THE CONSULTATION PHASE WHICH STARTED IN 2020 AND CONTINUES IN 2021. THIS PHASE IS AN OPPORTUNITY TO CREATE A SPACE DESIGNED BY THE RAETIHI COMMUNITY FOR NOT ONLY WHĀNAU LIVING IN THE TOWN TODAY BUT, FOR GENERATIONS TO COME. WHETHER A GROUP OR INDIVIDUAL, THE COLLECTIVE OPINIONS OF EVERYONE IN RAETIHI IS GOING TO HELP BUILD A HUB THE WHOLE COMMUNITY CAN BE PROUD OF.

PROJECT MANAGER - CATHY MCCARTNEY
027 4555 448
CATHRYNMCCARTNEY16@GMAIL.COM

YOUR ASPIRATIONS ARE THE INSPIRATION!

He manu anō ngā manu kai poroporo, he manu anō ngā manu kai miro e | One bird eats poroporo, another miro, each contributes in their own way

RAETIHI
COMMUNITY HUB
CONSULTATION
'20-21

UENUKU
RUAPEHU DISTRICT COUNCIL

E TŪ WHĀNAU!

HE AHA WHAT? Raetihi Community Hub Consultation Hui

KI WHEA WHERE? The Centre
14-16 Seddon Street
Raetihi

ĀWHEA WHEN? Tuesday 9th March
10.00am - 12pm &
5.30pm - 7.30pm

HE AHA AI WHY? Come, share your thoughts & help create a space designed by the Raetihi Community not only for today, but for generations to come!

YOUR ASPIRATIONS ARE THE INSPIRATION!

FOR MORE INFO HEAD TO | www.ruapehudc.govt.nz
www.uenuku.iwi.nz
facebook.com/RaetihiCommunityHubConsultation'20-21

RAETIHI COMMUNITY HUB / 20-21 CONSULTATION

Community engagement for the Raetihi Community Hub project is set to continue with the launch of an Aspirations Survey and the start of the Community Hui series.

Project Manager, Cathy McCartney said Raetihi residents will be able to share their thoughts and have their say throughout the consultation in a number of ways including: online, at community hui, completing surveys or by meeting her in person.

“I’m looking forward to continuing to gather the ideas and aspirations of all Waimarino-Raetihi residents.

“The opportunity to hear the everyone’s thoughts on what a community hub could be, including the sort of facilities, services, types of spaces, the look and feel wanted from this multi-function space is an exciting one.

“Whether you are part of a group or individual the collective opinions of everyone in Raetihi is going to help build a Hub the whole community can be proud of.”

It is proposed that along with a number of community services and social spaces, a multi-purpose community hub could also be the new home for the Ruapehu District Council’s (RDC) Service Centre and provide office space for Uenuku and activities of the iwi.

Raetihi Community Aspirations Hui begin on Tuesday 9 March at The Centre, 14-16 Seddon Street, through two identical two-hour sessions.

One begins at 10am and the session repeated again at 5.30pm that evening.

Residents are also invited to share their views through an Aspirations Survey. This can be completed online via the Survey Monkey platform directly: www.surveymonkey.com/r/R56QSXM or via the link on the dedicated Community Hub pages of the RDC and Uenuku websites.

“If residents would prefer to complete the survey in hard copy this is not a problem”, Ms McCartney said.

“These can be picked up from the RDC Service Centre and Uenuku Offices in Raetihi or, give me a call and we can arrange to have one dropped off for you.

“These can be returned to either office or, I can arrange for completed hardcopies to be picked up.”

Chair of Uenuku Charitable Trust, Aiden Gilbert said it’s important to take the time to stop, listen and most importantly hear the diverse and colourful voices of Waimarino-Raetihi residents.

“Through this, we will be able to start exploring the foundations of an inspirational and aspirational space for the whole community.”

RDC Mayor, Don Cameron said a facility like the proposed Raetihi Community Hub will help to pro-actively encourage the community to continue to make valuable connections with each other and enjoy collective social opportunities all in a warm safe environment.

For more information or to request a hard copy version of the survey, the Community Hub Project Manager Ms McCartney can be contacted on 027 455 5448 or via email on: cathrynmccartney16@gmail.com

**YOUR ASPIRATIONS ARE
THE INSPIRATION!**



**FOR MORE INFO | www.ruapehudc.govt.nz
www.uenuku.iwi.nz
facebook.com/RaetihiCommunityHubConsultation'20-21**



RAETIHI COMMUNITY HUB / CONSULTATION 20-21 ↓

15 February, 2021

Tēnā koe,

Raetihi Community Hub Community Consultation – Phase 1

Ruapehu District Council (RDC) and Uenuku Charitable Trust (Uenuku) are working together to hear the aspirations of local residents as they explore the potential development of and options for a new Community Hub in Raetihi. Neither Council or Iwi are looking to simply replicate what already exists in other towns but see this consultation phase as an integral and exciting opportunity to design a brand-new, purpose built space for Raetihi. A unique place which is aspirational, inspirational, and most importantly functional both now and into the future.

How can you start getting involved and share your thoughts?

Over the coming weeks there are a number of opportunities for individuals and whānau/families to start sharing your ideas. The first starts with an opportunity to catch up and have a kōrero/chat with Project Manager Cathy McCartney at the Waimarino Show this Saturday. You are also invited to share your thoughts, views and opinions during the first round of Hub Community Hui/Workshops starting next month on:

Tuesday 9 March @ 10am – 12pm at The Centre, 14-16 Seddon Street
Tuesday 9 March @ 5.30pm – 7.30pm at The Centre, 14-16 Seddon Street

As part of this ongoing consultation, a Phase 1 survey has also been created. Online links to this survey can be found via the Raetihi Community Hub page on both the ruapehudc.govt.nz and uenuku.iwi.nz websites. Would prefer to complete the survey in hard copy? Please head to the RDC Service Centre in Raetihi and pick up one or, contact the Project Manager Cathy McCartney via the details below to arrange for a copy to be delivered to you. She can also arrange hard copy surveys to be picked up on completion.

Are you also a member of a local Group, Organisation or owner of a Businesses owner Raetihi?

During this initial phase, we are also planning to come and meet as many local groups, organisations and business owners as possible so we can capture your thoughts on how the space can be designed to specifically support your unique needs and requirements. Please contact Cathy directly via her details below and let her know a time/s work for you and your Group, Organisation or Businesses.

Ngā mihi nui

Cathy McCartney & the Raetihi Community Hub Project Team

email: cathrynmccartney16@gmail.com

or cell: 027 4555 448

YOUR ASPIRATIONS ARE
THE INSPIRATION!



FOR MORE INFO | www.ruapehudc.govt.nz
www.uenuku.iwi.nz
facebook.com/RaetihiCommunityHubConsultation'20-21



RAETIHI

COMMUNITY HUB
CONSULTATION



'20-21

the Raetihi Community Hub Steering Group & Raetihi Promotions invite all Waimarino-Raetihi businesses to:

HE AHA Business After 5 Event
WHAT?

KI WHEA Raetihi
WHERE? Cosmopolitan Club
32 Seddon Street

ĀWHEA Wednesday 16th June
WHEN? 5.30pm

HE AHA AI Come, share your
WHY? thoughts & help
create a space
designed by the Raetihi
Community for not only
for today but, for generations
to come!

**YOUR ASPIRATIONS ARE
THE INSPIRATION!**

FOR MORE INFO HEAD TO | www.ruapehudc.govt.nz
www.uenuku.iwi.nz
facebook.com/RaetihiCommunityHubConsultation'20-21



RAETIHI COMMUNITY HUB / 20-21 CONSULTATION

25 May 2021

For immediate release

Hub Consultation Event for all local business owners

For the month of June, the Raetihi Community Hub Steering Group are reaching out to local businesses, community groups, and clubs on what they want from a multi-purpose community hub.

Project Manager Cathy McCartney said that as a shared community facility the input of Waimarino-Raetihi's organisations was critical to getting things right. "The vision for the Community Hub is that it will replace Council's current service centre, as well as exploring the option of providing a space for Uenuku and related iwi activities, along with other community services, activities including providing areas for use by organisations," she said.

"Engagement with wider community has been going really well with a lot of people already having had their say on their vision and thoughts for the Hub. "Along with continuing this mahi, we want to ensure we capture what local businesses think a Community Hub could be including, the sort of facilities, services, types of spaces, look and feel needed or wanted from a multi-function space, and where it should be located."

A great opportunity to find out more about the project and join in the discussion will be the Business After Five evening on Wednesday 16th June at 5.30pm at the Raetihi Cosmopolitan Club on Seddon Street.

"If you own a Raetihi business the Project Steering Group in conjunction with Raetihi Promotions would like to invite you to the After Five event.

"And please note, if you can't make it along to the Cosmopolitan Club on 16th June I am happy to come to you.

"I can be contacted directly on 0274 555 448, or email cathrynmccartney16@gmail.com, and we can arrange to come to talk about the Community Hub project at your business or next group meeting."

In the interim anyone wanting more information or to provide some feedback can do so through the Raetihi Community Hub Consultation '20-21 Facebook page or via the Phase One Survey link which can be found on both the Ruapehu District Council and Uenuku websites.

Ngā mihi nui

Cathy McCartney & the Raetihi Community Hub Project Team

email: cathrynmccartney16@gmail.com

or cell: 027 4555 448

YOUR ASPIRATIONS ARE
THE INSPIRATION!



FOR MORE INFO | www.ruapehudc.govt.nz
www.uenuku.iwi.nz
facebook.com/RaetihiCommunityHubConsultation'20-21



NGĀ MIHI

Thank you to everyone in the Raetihi community who so generously shared their thoughts, knowledge, dreams, aspirations and inspirations for your special place and whānau.

Ngā mihi to the Raetihi Community Hub Project Steering Group: Aiden Gilbert (Chair), Don Cameron, Vivienne Hoeta, John Hotter & Elijah Pue, the Ministry for Primary Industries for contributing to this mahi along with Dr Johnson Witehira, Liz Brooker and project leads: Ruapehu District Council (RDC) and Uenuku Charitable Trust (UCT) for their ongoing support.



YOUR ASPIRATIONS ARE
THE INSPIRATION!