



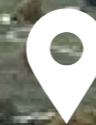
# TE TIHI O TE RAE KIMĀKŌTUKU

Raetihi Community Hub

COMMUNITY  
MEETING



**"A community hub that is the heart of Raetihi, a place to share stories and come together. A place that celebrates culture, heritage, the environment, a community hub that is sustainable"**



*Ref: Whites Aviation (Leo White) - Painted Photo - Raetihi + Ruapehu c.1950s*

# Introduction

## Vision + Aspirations



### Cultural

Acknowledging iwi and hapū Māori Local Community Wider community across the rohe..



### Environment

Positive relationship with Te Taiao and Papa as opposed to extractive relationship of the past. Kaitiakitanga manifested in the building and site



### Community Hub

Multi-purpose. Accessible by other local communities too. A place that might draw in others from around the rohe to Raetihi.



### Sustainable

Embedded into Raetihi.



### Heritage

Weaving together the stories of the past, making note that this building space is not a museum. It should be future focussed.

# Briefed Spaces

## Functions and Adjacencies



Total ~650-700sqm GFA

### Public Use

~ 400 sqm



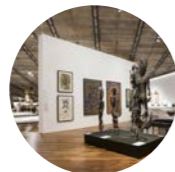
#### Library/ Flexible

A broad range of flexible and interconnected spaces housing the library collection and supporting library programming. Includes computer technology space, with space for laptops. Digital research and heritage area. Space for wriggle 'n' rhyme and reading to tamariki. Space for youth and holiday programme activities. Ability to move all furniture/ shelving and hold a large community meeting or event occasionally. Some areas could have sliding partitions to make them more discreet.



#### Entry

An open entry area with a wind lobby and comfortable seating that encourages social interactions and provides for formal ceremonies. Space for council consultation and information to be displayed. Public counter (for RDC and TKW).



#### Exhibition

An exhibition space for Te Korowai o Wainuiārua. This should be adaptable and future focused and support multi-media story telling and exhibition.



#### Meeting/ Activity Spaces

Large and small bookable meeting rooms (acoustically separate) to accommodate a variety of activities. Including a large meeting room (seminar, community board meeting, iwi meeting, restorative justice, film society), a large 'messy' workshop space (holiday programmes, weaving workshops, eco-learning) and smaller meeting spaces (RDC, budgeting services, visiting MSD & MoJ and community use).

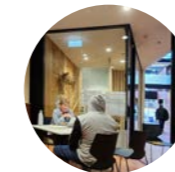


#### Community Kitchen & Amenities

Somewhere where users and visitors can make a cup of tea or heat some food for themselves or an event or meeting.

### Dedicated spaces

~ 135 sqm



#### Ruapehu District Council

Open plan workspace for 2-4 desks. Public counter (to share with TKW) with post office retail space. Kitchenette and toilets (to share with TKW). Storage for stationary etc.



#### Te Korowai o Wainuiārua

1-2 offices. Open plan workspace for 5-6 desks. 1 small meeting space. Public counter (to share with RDC). Kitchenette and toilets (to share with RDC). Storage for stationary etc.



#### Police Kiosk

Provision of desk/ kiosk for up to 1 staff member. TBC



#### Secure storage

Separate/secure/ fireproof storage for council property files and archives for RDC.

### Support Space

~ 125sqm



#### Back of House / Support Space

25% grossing factor allowance for circulation, plant, storage, waste management, services and building structure. Toilets and a parent room are also included.

# Place

## Wider Cultural Context



The proposal considers the broader Māori context, referencing Raetihi's cultural background and community narratives; connecting the site to the Kāhui Maunga catchment in Central to West Aotearoa. The broader context includes significant landmarks such as Ruapehu and the Whanganui River.

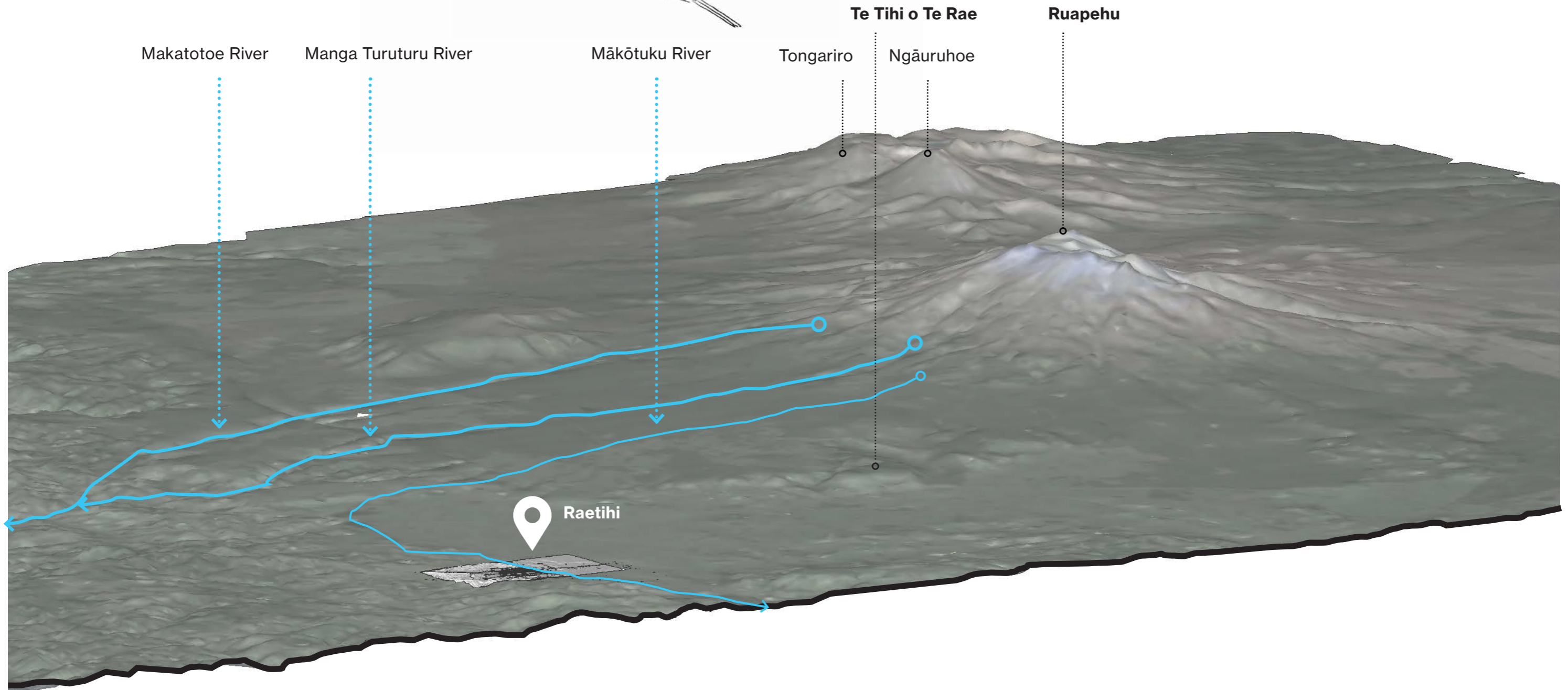
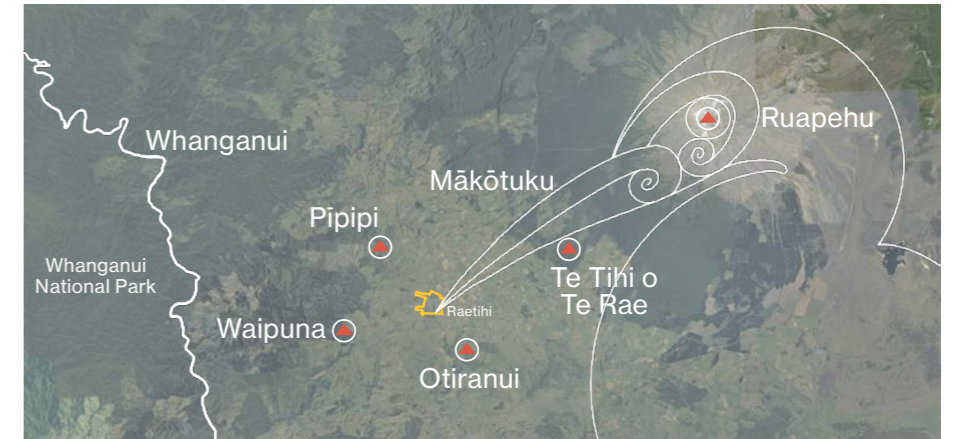
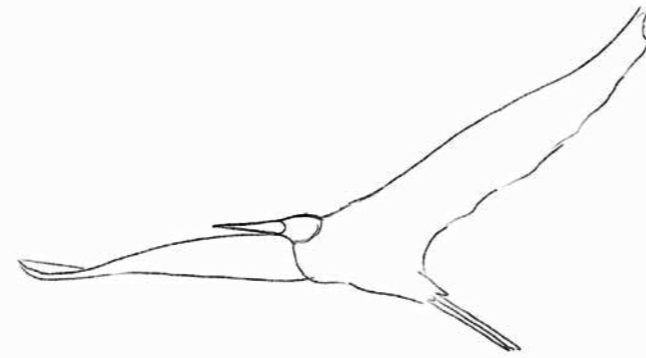
Our proposal seeks to acknowledge these connections whilst reinforcing ties with the local iwi.

# Place

## Cultural Context - Maunga + Awa



Here we can appreciate the sites environment by its significant connection to the maunga and also through this axonometric view we are highlighting the journey Mākōtuku takes before reaching Raetihi, the Site and beyond.



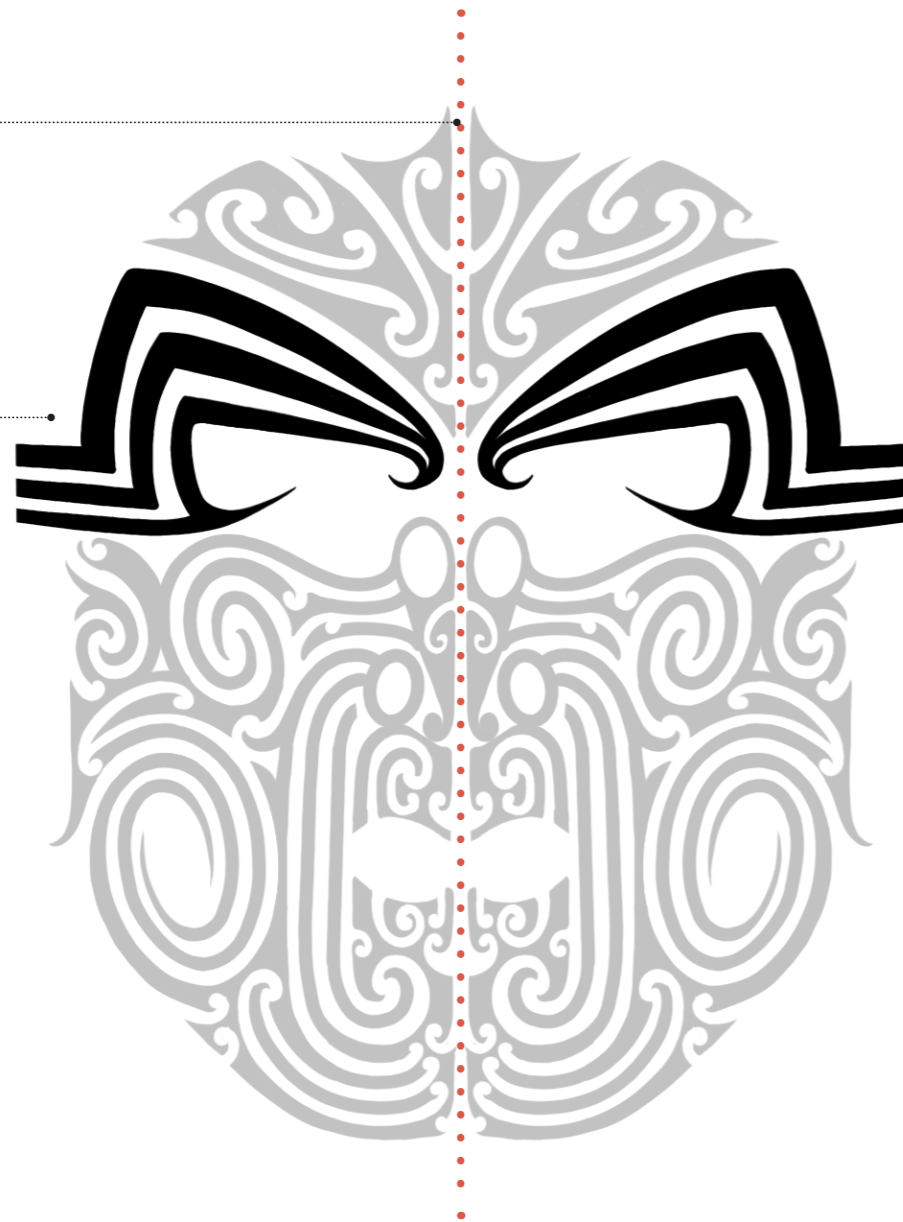
# Concept Development Narrative Organisation



Manawaora

Te Tihi o Ruapehu

Te Tihi o te Rae ki  
Mākōtuku

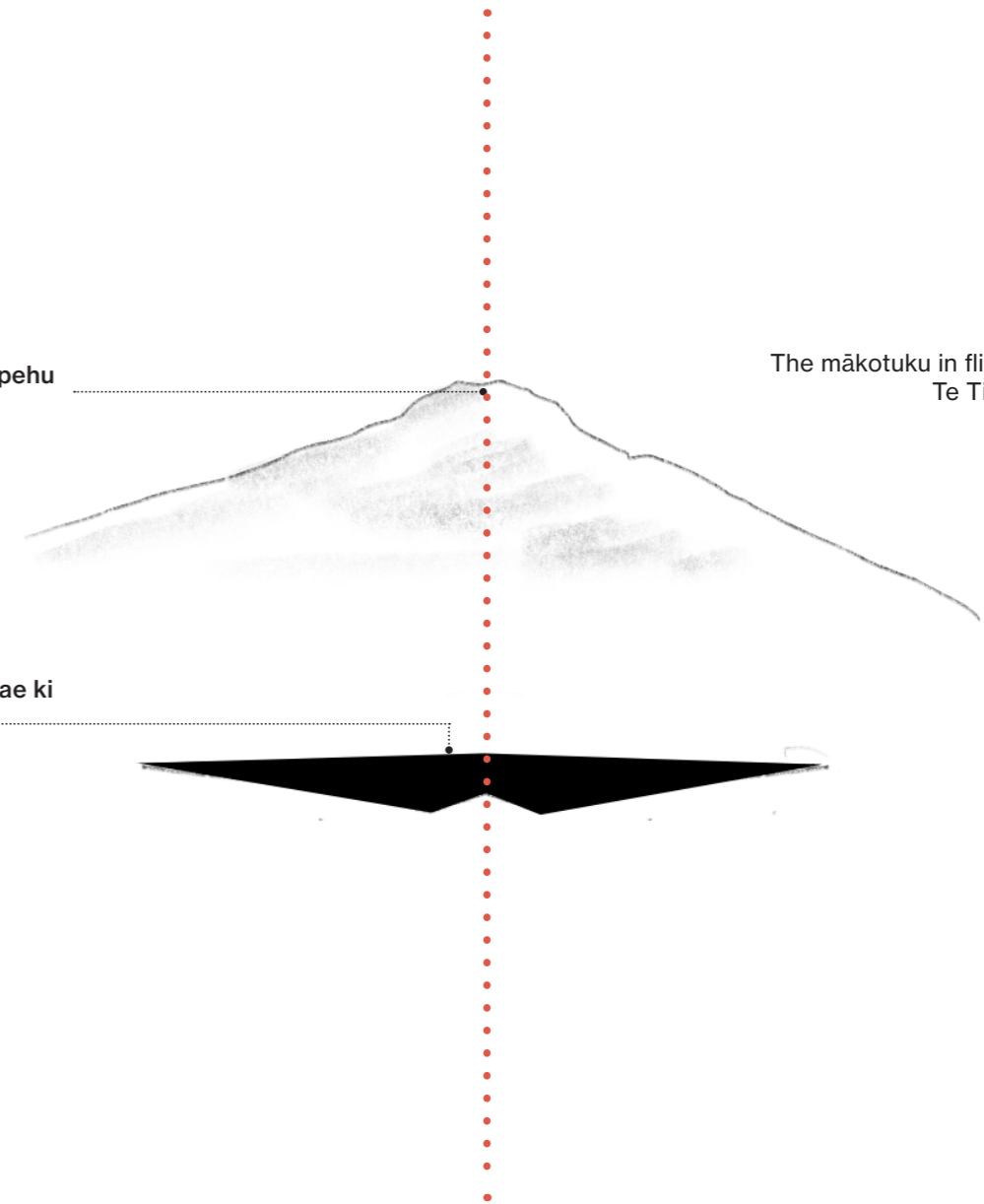


Concept

Te Tihi o Ruapehu

The mākotuku in flight towards  
Te Tihi o Te Rae.

Te Tihi o te Rae ki  
Mākōtuku



## Te Tihi o Te Rae

The cultural context is captured within the tīwhana and offers a framework for the conceptual development of the proposal. The tīwhana provides a reference for the formal organisation of the building with the tihi aligned to the peak of Ruapehu. Introducing the manawaora line as our key axis for the building anchors the design to place.

## Kōtuku

This sketch summarises the proposal in reference to the context, particularly how the tīwhana informs the design, and manawaora line organises the building.

# Site Cultural Context





# Site

## Community and Open Space Network



The site has good proximity to the town centre and marae and is part of the open space network that follows the Mākōtuku river. The site is directly adjacent to the 4.1km Mākōtuku trail, a recently developed community asset along the awa. The trail provides places to fish, swim, cycle, enjoy significant ngahere, and even glow worms.

### Legend

- Site Extents
- Open Space / Reserve
- Vegetation - Predominantly exotic
- Vegetation - native
- ↔ Trail / Walkway

### Key

- 1 Raetihi Fire Station
- 2 RDC Library & Service Centre
- 3 Raetihi Theatre
- 4 Raetihi Cosmopolitan Club
- 5 Waimarino Health Centre
- 6 Waimarino Baptist Church
- 7 Police Station
- 8 Community Garden
- 9 Raetihi Marae
- 10 Rātana Church
- 11 Mo Te Whānau te Kohanga Reo
- 12 Uenuku Charitable Trust
- 13 Raetihi Swimming Pool
- 14 Raetihi Holiday Park
- 15 Public Toilets
- 16 Early Childhood Education Centre
- 17 Raetihi Primary School



# Plan Development

## Existing Site - Building Removal + Setbacks



# Plan Development

## New Building Footprint + Setout



# Plan Development Building Programme



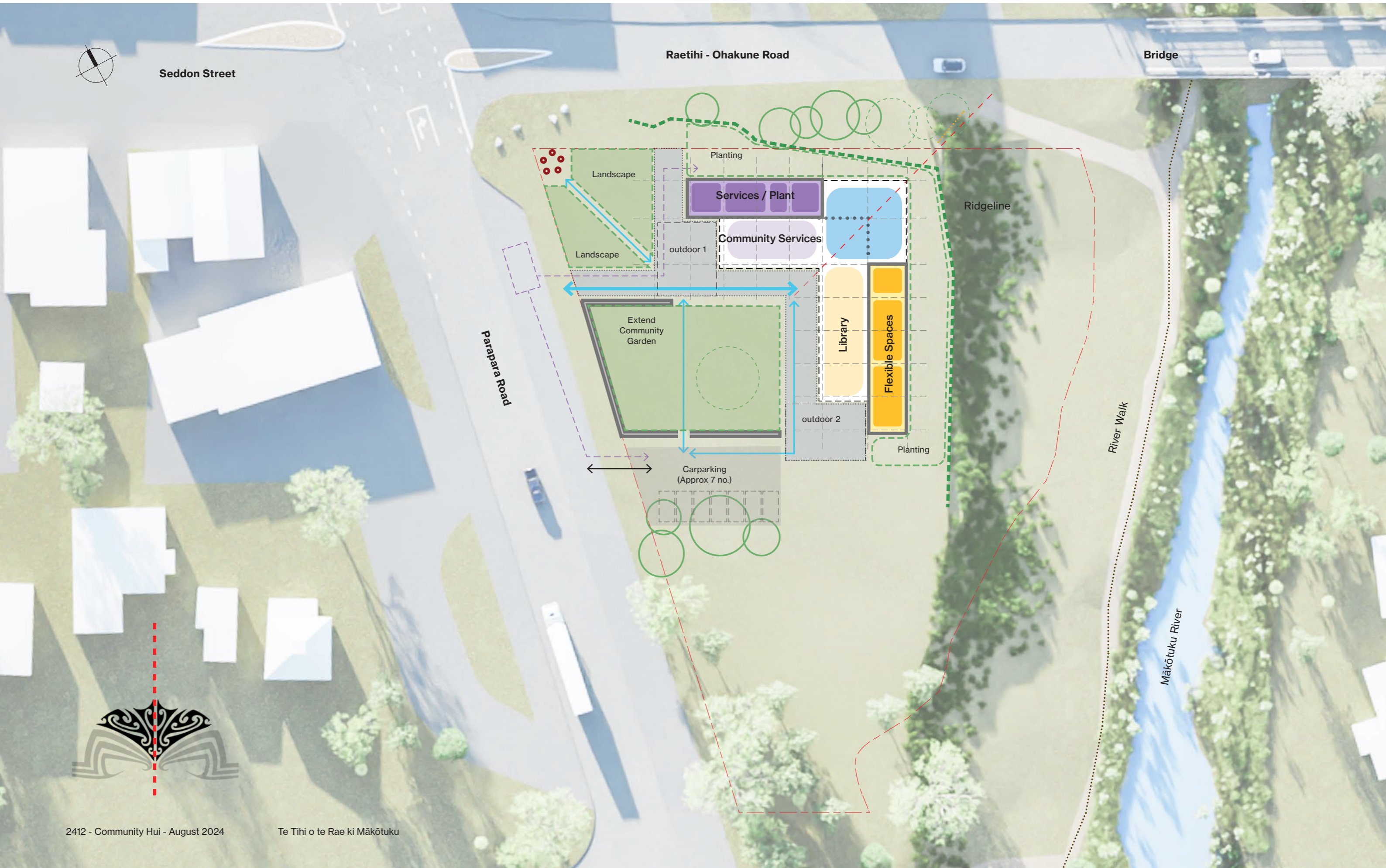
# Plan Development

## Landscape - Outdoor room



# Plan Development

## Landscape - Programme and circulation



Seddon Street

Raetihi - Ohakune Road

Bridge

Parapara Road

Ridgeline

River Walk

Mākōtuku River

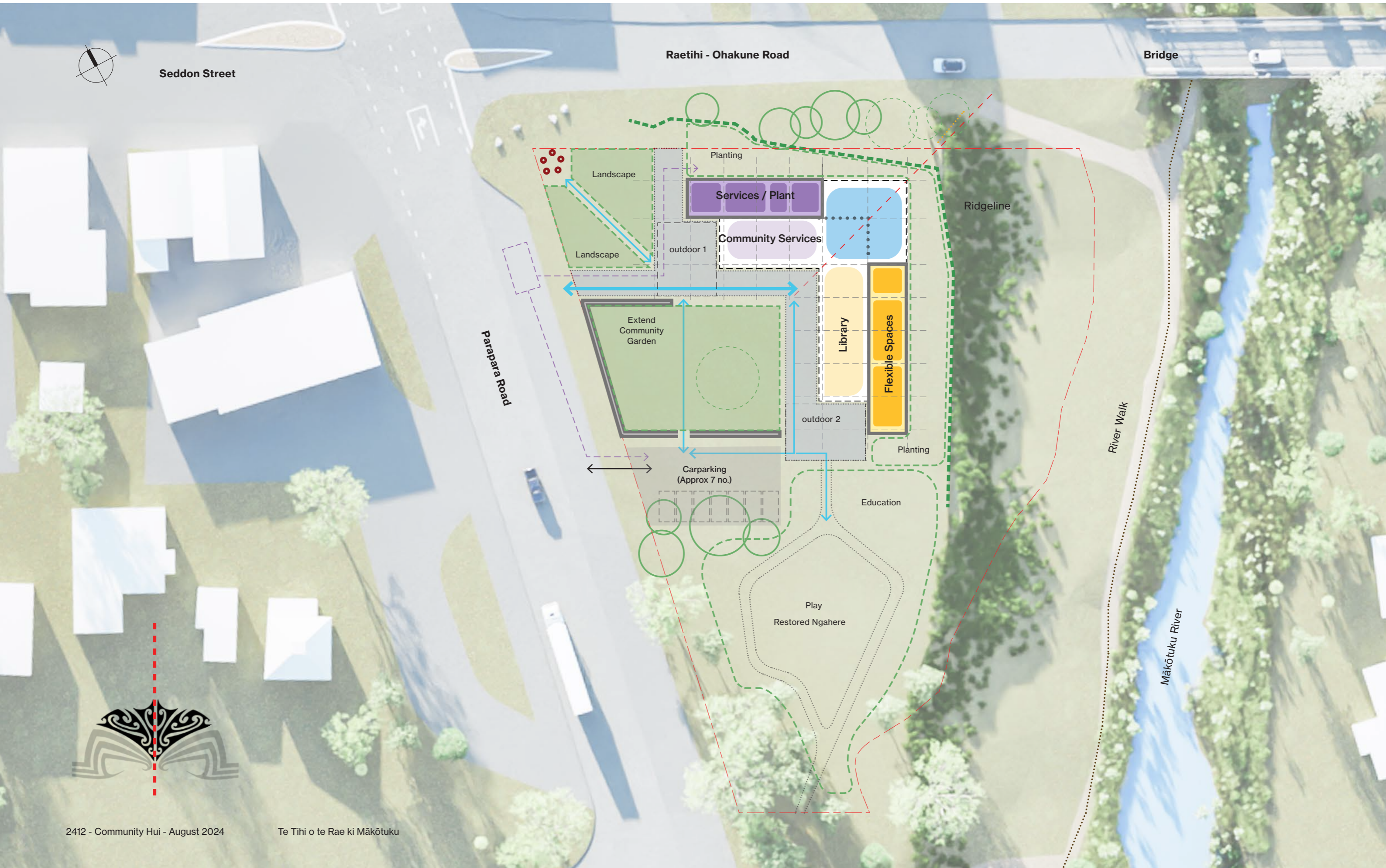
Carparking (Approx 7 no.)

Services / Plant  
Community Services  
Library  
Flexible Spaces  
outdoor 1  
outdoor 2  
Planting  
Landscape  
Extend Community Garden



# Plan Development

## Landscape - Phase 2 - Restored Ngahere



# Plan Development

## Developed Building & Landscape Plan



Seddon Street

Raetihi - Ohakune Road

Bridge

### Legend:

- 1 Pou / Marker
- 2 Approach / Tomokanga
- 3 Ātea
- 4 Community gardens, fruit trees
- 5 Carpark
- 6 Education space
- 7 Natural play
- 8 Restored ngahere
- 9 Events lawn
- 10 Planting - 'alpine edge'

### POTENTIALS

- Fire pit
- Hāngi pit
- Pā harakeke / Rongoā focus



Parapara Road

Ridgeline

Bank

River Walk

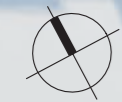
Existing BMX

Mākōtuku River



# Plan Development

## Developed Building & Landscape Plan + Roofs



Seddon Street

Raetihi - Ohakune Road

Bridge

### Legend:

- 1 Pou / Marker
- 2 Approach / Tomokanga
- 3 Ātea
- 4 Community gardens, fruit trees
- 5 Carpark
- 6 Education space
- 7 Natural play
- 8 Restored ngahere
- 9 Events lawn
- 10 Planting - 'alpine edge'

### POTENTIALS

- Fire pit
- Hāngi pit
- Pā harakeke / Rongoā focus?



Parapara Road

Ridgeline

Bank

River Walk

Existing BMX

Mākōtuku River

# Plan 1:200

## Entry + Procession



Pou

Ruapehu

Site Boundary



PARA PARA ROAD

Whakaeke (entry)

Pōhiri

Mahau

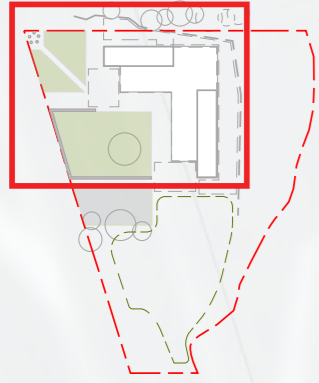
Ātea (connection)

Manawaora

Controlled Views to landscape, river, marae & Ratana Church

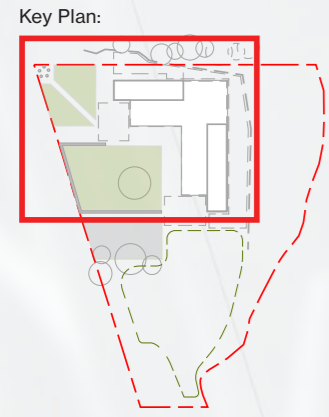
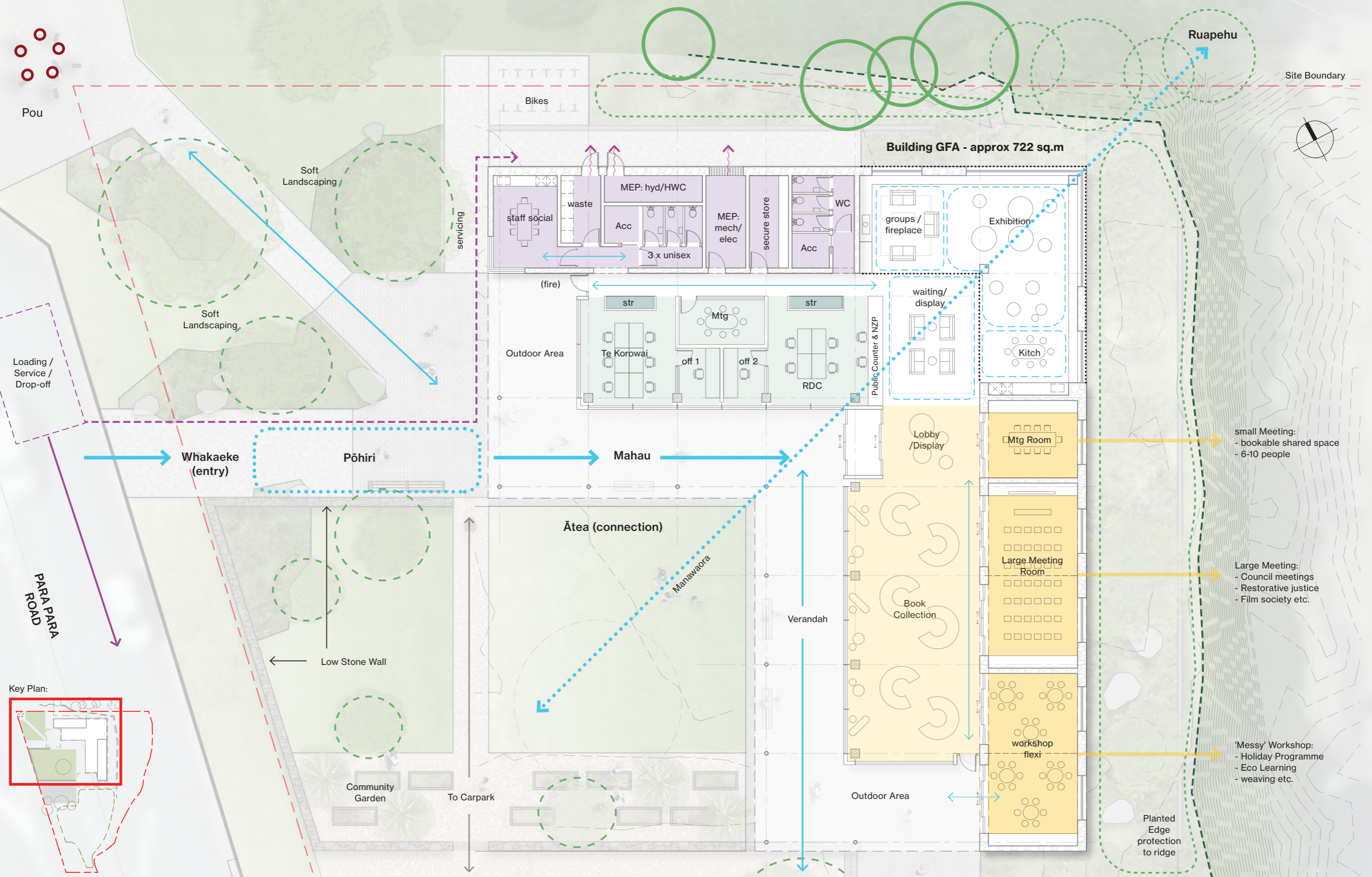
Planted Edge protection to ridge

Key Plan:



# Plan 1:200

## Internal + External Programme



small Meeting:  
- bookable shared space  
- 6-10 people

Large Meeting:  
- Council meetings  
- Restorative justice  
- Film society etc.

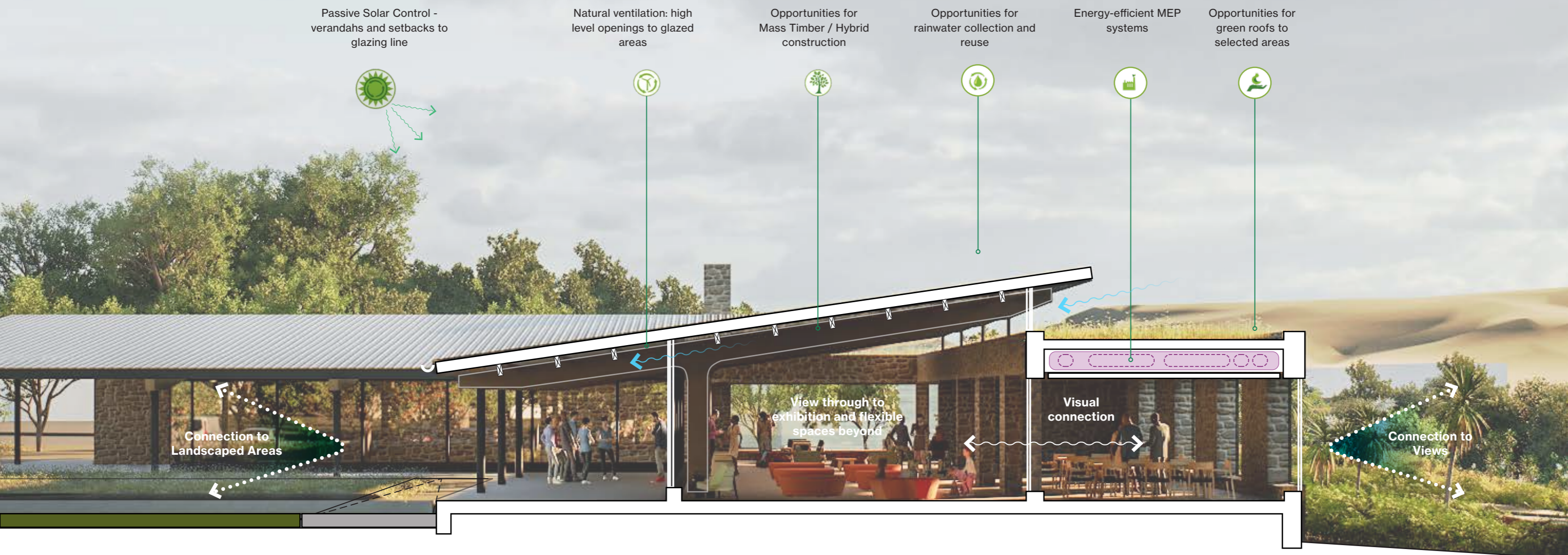
'Messy' Workshop:  
- Holiday Programme  
- Eco Learning  
- weaving etc.

# Section Study (Library)

## Spatial Organisation + Sustainability



"A community hub that is the heart of Raetihi, a place to share stories and come together. A place that celebrates culture, heritage, the environment, a community hub that is sustainable"



Passive Solar Control - verandahs and setbacks to glazing line



Natural ventilation: high level openings to glazed areas



Opportunities for Mass Timber / Hybrid construction



Opportunities for rainwater collection and reuse



Energy-efficient MEP systems



Opportunities for green roofs to selected areas



Connection to Landscaped Areas

View through to exhibition and flexible spaces beyond

Visual connection

Connection to Views

Lawn - Landscaped area

Path

(Ramp to carpark)

5m continuous Verandah

(Outdoor activity space)

Flexible Library Space

Meeting Rooms / Workshops

Planted edge control to Ridgeline

# Elevation Study Street Threshold



The Programme is established by the manawaora axis. The main entry acknowledges the Raetihi Marae by referencing a similar western access. The Poupou activates the corner; acting as a signal for those entering from the town side & establishing a cultural presence prior to entering the site.

'Poupou' - opportunities for Gateway. Reference to Te Kāhui Maunga

Soft Landscaping to corner: route through to building

'solid' stone building element provides buffer and protection to road

Chimney beyond

Glazed 'pavilion': offices to corner provide passive surveillance and activation to elevation

Access from West: covered verandah with paved extension to existing footpath

Library and Landscaped courtyards beyond



## Poupou

(Indicative Location for gateway pou)

## Soft Landscaping

(Buffer to Para Para and Ohakune Roads - pedestrian pathway through)

## Whakaeke - Access from West

5m - covered verandah and extended path

# 3D Views

## 01



# 3D Views

## 02



# 3D Views

## 03 - Raised Roof Option



Bike walk / biking track

Gabion/stone walls

Glazed openings connect to views

Seddon Street



# 3D Views

## Internal View





**Tāmaki Makaurau  
Auckland**  
Level 2, 3-13 Shortland Street  
Auckland 1010  
Aotearoa New Zealand  
T +64 9 307 5970  
auckland@architectus.co.nz

**Ōtautahi  
Christchurch**  
Level 1, 152 Oxford Terrace  
Christchurch 8011  
Aotearoa New Zealand  
T +64 3 377 7086  
christchurch@architectus.co.nz

**Tauranga**  
Basestation  
148 Durham Street  
Tauranga 3110  
Aotearoa New Zealand  
T +64 22 195 5893  
tauranga@architectus.co.nz

**Te Whanganui-a-Tara  
Wellington**  
30 Waring Taylor Street  
Wellington 6011  
Aotearoa New Zealand  
T +64 27 415 0022  
wellington@architectus.co.nz

**Kaurna Country  
Adelaide**  
Level 1, 15 Leigh Street  
Adelaide SA 5000  
Australia  
T +61 8 8427 7300  
adelaide@architectus.com.au

**Turrbul and Jagera/Yuggera Country  
Brisbane**  
Level 2, 79 Adelaide Street  
Brisbane QLD 4000  
Australia  
T +61 7 3221 6077  
brisbane@architectus.com.au

**Yugambeh and Bundjalung Country  
Gold Coast**  
Level 1, 37 Connor Street  
Burleigh Heads, QLD 4220  
Australia  
T+61 7 56193531  
mail@conradgargett.com.au

**Wurundjeri Country  
Melbourne**  
Level 25, 385 Bourke Street  
Melbourne VIC 3000  
Australia  
T +61 3 9429 5733  
melbourne@architectus.com.au

**Whadjuk Noongar Country  
Perth**  
QV1 Upper Plaza West  
250 St. Georges Terrace  
Perth WA 6000  
Australia  
T +61 8 9412 8355  
perth@architectus.com.au

**Gadigal Country  
Sydney**  
Level 18, 25 Martin Place  
Sydney 2000  
Australia  
T +61 2 8252 8400  
sydney@architectus.com.au

**Bindal and Wulgurukaba Country  
Townsville**  
Level 1, 45 Eyre Street  
North Ward QLD 4810  
Australia  
T +61 7 4795 0200  
mail@conradgargett.com.au



## DRAFT another option?

"A community hub that is the heart of Raetihi, a place to share stories and come together. A place that celebrates culture, heritage, the environment, a community hub that is sustainable"

